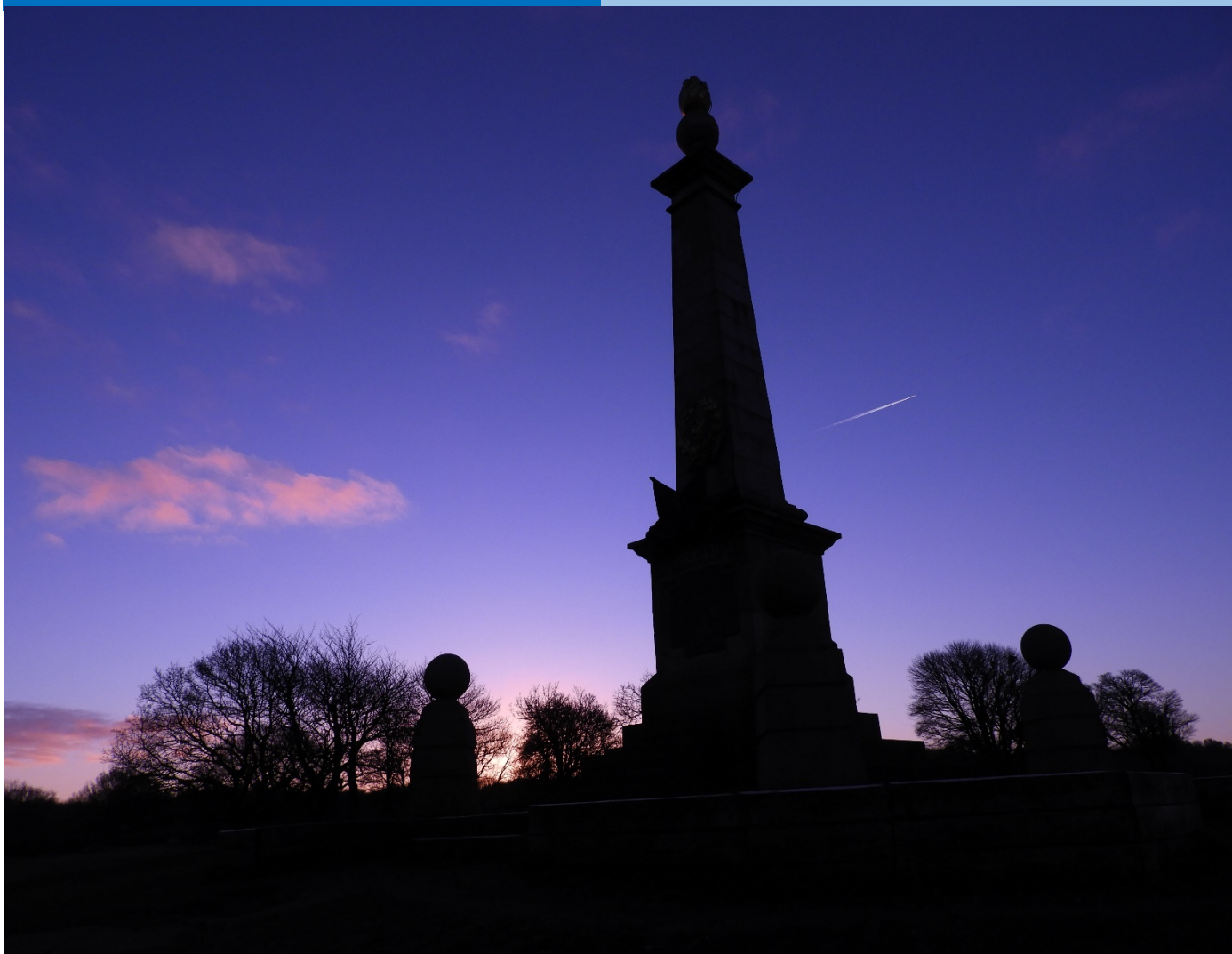


Ellesborough Magazine

Published by Ellesborough Magazine Committee

December 2022 Issue 179



In This Issue:	page:		page:
Letters	6	Kids Puzzles	25
Village Events	7	Village Reports	26
Articles	10	Parish Council News / Planning	34
Recipes	12	Charties & Initiatives	39
Farm News	21	Local Businesses	44

THE CHILTERN BREWERY

FINE ENGLISH ALES
FROM THE CHILTERN HILLS



THE PERFECT PALETTE OF PINTS

www.chilternbrewery.co.uk Twitter. @Chiltern_Brewer

The Village Chalkboard

Community events at Ellesborough

CHURCH SERVICES at ELLESBOROUGH & DUNSMORE CHURCHES

CHRISTINGLE - Sun 4th Dec.
PARISH COMMUNION – Sun 11th Dec
CAROLS & READINGS – Sun 18th Dec
CRIB SERVICE – 24th Dec
FAMILY SERVICE - Sun 25th Dec
CAROL SERVICE at DUNSMORE CHURCH – Sun 11th Dec

CAROLS
ELLESBOROUGH
SILVER BAND at
VILLAGE HALL

Fri 9th Dec
7pm

WREATH
MAKING
WORKSHOP
(DUNSMORE
VILLAGE HALL)

Thurs 8th Dec

WENDOVER
ART CLUB
St ANNES HALL

8th/Dec
12th/26thJan
9th/18th/23rd Feb
9th/ 23rd Mar

KEHS
STEWART HALL

Tues 6th Dec
Tues 7th Feb

PUB QUIZ
THE RUSSELL

Tues 6th Dec
Tues 3rd Jan
Tues 7th Feb

XMAS LADIES
LUNCH & MENS
PUB LUNCH
(DUNSMORE
VILLAGE HALL)

Thurs 15th Dec

CHILTERN
LADIES (WI)

Wed 7th Dec
Wed 4th Jan
Wed 1st Feb

VILLAGE
COFFEE &
CAKE

Fri 16th Dec
Fri 20th Jan
Fri 17th Feb

PARISH COUNCIL MEETINGS 16th Jan & 20th March

Acting Editor's Letter



Dear readers

This is the penultimate issue of the village magazine.

Unless a volunteer steps forward to help with the editing we will no longer be able to keep publishing.

The editorship could be done as a shared role but I cannot commit the necessary time during the summer months.

A strong committee is in place to help with the advertising, distribution, administration of the publication and general support of the role.

If you can help, please get in touch.

Richard Jennings (acting editor)

PLEASE SEND COPY FOR THE NEXT ISSUE TO:

Richard Jennings, edellesboroughmgz@gmail.com

by 15th February 2023

ALL ENQUIRIES REGARDING ADVERTISING TO:

Annabelle, Advertising Manager ellesboroughmagazine@hotmail.co.uk

Please note that the last date for submission of advertising material is the 10th February 2023

SUBSCRIPTION / DISTRIBUTION ENQUIRIES

Janette West subsemgz@gmail.com

MAGAZINE DONATIONS

Tony Young young.ellesborough@gmail.com

BACS: Ellesborough Village Magazine

Sort Code: 40-08-41 Account No: 61151614

Cover Photo - Dawn at Coombe Hill - Janette West

Ellesborough Magazine Needs



We need a volunteer to step forward to help edit our quarterly magazine. If no-one can be found, the magazine will no longer be able to be published.

Please contact the magazine Chairman, Richard Jennings, at edellesboroughmgz@gmail.com.

Ring for the King

Bellringers across the country are making plans to "Ring for the King" at his coronation next May and like so many towers Ellesborough needs ringers to achieve this aim.

There are about 6,000 rings of bells across the British Isles with over 38,000 bells but only around 30,000 ringers So we need new ringers on a national scale and more specifically at Ellesborough.

So why not take up the challenge to learn to ring and be ready to "Ring for the King " next year?

Come to the Ellesborough tower on a Wednesday night to see what happens, look at our newly rehung bells and even have a go at ringing?

Contact myself jlesfloyd@gmail.com to arrange to meet the ringers who will be delighted to welcome you into the tower.

Les Floyd

What's Wrong with Bonfires?

Air Pollution

Burning garden waste produces smoke and noxious fumes – especially if that waste is green or damp. This will emit toxic pollutants including particles and dioxins. These pollutants can act as "climate forcers", meaning they can contribute to climate change in the short or long term.

Harm to Health

Air pollution is known to have damaging health effects and people with existing health problems are especially vulnerable eg. asthmatics, bronchitis sufferers, people with heart conditions, children and the elderly.

Nuisance

Smoke and smell from bonfires prevent neighbours from enjoying their gardens, opening their windows or hanging washing out. And it won't just be your immediate neighbours who are affected – smoke travels. Allotments near homes can also cause problems if plot holders burn green waste and leave fires smouldering.

Bonfire Guidelines

- Only burn dry material – and only if it's absolutely necessary.
- Never burn household waste, such as treated timber or anything containing plastic, rubber or foam, as these contain chlorine and other toxic chemicals.
- Avoid lighting a fire in unsuitable weather conditions – smoke hangs in the air on damp, still days. If it is too windy, smoke blows into neighbours' gardens and windows and across roads.
- Keep your fire away from trees, fences and buildings.
- Never use oil, petrol or methylated spirits to light a fire.
- Never leave a fire unattended or leave it to smoulder – put it out.

Helen Robinson

(with acknowledgement and thanks to Environmental Protection UK)

Thank You Village Litter Pickers

The community effort to tidy up our village is admirable and is helping towards keeping the litter under some control.

The general view is that the litter has decreased – but much is still collected and we are making a difference.



Nicely Collected

Thank you to all who gave up their time on a damp Sunday morning to improve our surroundings and to Len & Rex for cleaning and clearing the road signs.

Thank you from Janette & Judith

MacMillan Coffee Morning

SEPTEMBER 2022

Despite somewhat cloudy, chilly weather, it was another fun morning's fundraising.

Thank you so much to everyone who came, it was great to see you; and to those of you who took the time to bake and donate cakes and biscuits, thank you too, they were absolutely delicious.

Thanks also to the amazing local businesses who yet again donated fantastic raffle prizes. Many of you who couldn't come on the day have made some very generous donations on my JustGiving page.

So the final total, I am delighted to reveal, is an astonishing £3,755.40!

It's another brilliant total for this very important charity. My grateful thanks to you all. See you next year!

Julie Needle



KIMBLE & ELLESBOROUGH HORTICULTURAL SOCIETY



Our monthly meetings are held at Stewart Hall. Members will be notified in advance of any Covid precautions. If you are not a member but would be interested in coming to any meetings please contact Brian Butler (Chairman) at butler@care4free.net or call him on 01844 342220 before attending. Please see our website for any updates.

DECEMBER

Up, Up and Away

Tuesday 6

Have you ever wondered what it would be like to travel through the air in a balloon? For many people, the thought of floating through the sky is both exciting and mysterious. While it may seem like magic, there is actually both an art and science to flying a balloon. In his talk, Peter George will share photos, video and stories of thrills and spills from over 35 years of piloting these beautiful aircraft.

FEBRUARY 2023

Speaker To Be Confirmed

Tuesday 7

Meetings are held at 8.00 pm every 1st Tuesday of the month (except January and August) at Stewart Hall, Little Kimble. Although we pride ourselves on our expert speakers, all talks are very informal and are followed by refreshments and a raffle.

Visitors are always welcome. If you decide you would like to join please make yourself known to any Committee member or contact Charlie Taylor, Membership Secretary, at kehs.bucks@outlook.com. Please see our website for more information.

www.e-voice.org.uk/kehs/

Wendover Art Club



Wendover Art Club meet on the 2nd and 4th Thursdays of each month at St Anne's Hall, Wendover Art Club, Aylesbury, HP22 6JG between 7:30 and 9:30pm. Please note there is a fee of £10 for non members coming to demos and a £2 fee for Creative Evenings

December

8th Members Christmas Get Together.

Our chance to relax and enjoy a few nibbles and a drink whilst indulging in some party game loosely associated with art.

January

12th Creative evening - Winter landscape in ink. As we cannot rely on the weather at this time of year we're going to use the ink and paper left over from the NPHF workshop to create a snow scene. NB the ink is black so it could be fun working it all out and seeing what we can achieve. Do bring your own tools/brushes, and a pack of baby wipes may be useful.

26th Naomi Rose Johnson – coloured pencils – interactive. Naomi draws wild life with coloured pencils. She will demonstrate and we will be able to join in with creating our own pictures with the materials provided. If you do have your own coloured pencils then it's ok do bring them along as well.

February

9th Creative Evening of playing with pastels/ coloured pencils. There will be some paper and pastels available for us to try out more of Naomi's techniques, but if you have any do bring your own as well. With pastels aprons are essential.

18th Saturday Untutored workshop. This is one of the best bits of the calendar. A chance to paint from 10am till 4pm with no interruptions. We bring our own work and lunch but there are the makings for tea, coffee and if you're lucky a biscuit or two.

23rd DVD Come along and watch a professional paint. With a DVD you're looking over their shoulder and hearing why they are painting that particular subject in that particular way. There's often that 'why didn't I think of that' moment, but essentially a lot of great information on 'how to'.

March

9th Creative Evening – working on reflections from empty bottles. You will need to bring the empty bottles and we'll practice what is quite a difficult exercise. The media can be pencil, pastel or any other of your choice.

23rd Varvara Nieman – acrylic – still life . Some of you will be aware of Varvara's, energetic and colourful approach to painting and I'm sure this will be the same.

Peter Edwards

From the Rector

I am writing to wish you all some Peace, some Joy, some Love and Fellowship this Christmas. We are living in anxious, challenging times – peace, love, joy and friendship become all the more precious for being perhaps in short supply.

It is worth reflecting on the fact that the message of the angels with their tidings of peace and joy at Christmas came at a time of acute political tension in Judea and yet the Gospel Christmas stories tell us that some heard the message. Mary who was prepared to open her whole life to God and Joseph who was prepared to obey God and serve Him came the closest to knowing God. The shepherds, outcast and lowly in society, heard the message also and were prepared to run to Bethlehem. Anna and Simeon who had waited and prayed for years were granted the privilege of seeing Jesus in the Temple when he was presented there and recognised him for who he was. Later the wisemen who were prepared to take so much trouble to seek Jesus were also given the privilege of finding the Saviour. Herod the rich and powerful ruler with much hatred in his heart, did not get to meet Jesus nor did the Jewish priests with their dedication to the status quo. Reflecting on who heard the message and who did not might give us some clues as to how we might see and recognise God in our turbulent times.

I will give the last word to Simeon. He held Jesus in his arms and said 'He is the light of the world'. However we understand God, what Jesus stood for, Love, Joy, Peace is what the world needs. Opening our hearts to these things seems as difficult as it always has been but we need to seek them and work at making space for them in this turbulent world.
Revd. Janet Wales

Church Services



St Peter & St Paul Church - Ellesborough

Date	Time	Service
4th December	10.45	Christingle
11th December	10.45	Parish Communion
18th December	18.00	Carols & Readings Service
24th December	16.00	Crib service
25th December	10.45	Christmas Family Communion

Church of The Resurrection - Dunsmore

Date	Time	Service
11th December	16.30	Carol Service

An 800 Year Anniversary - in 2023

Just inside the main door into the parish church there is a large board with a list of all the Rectors who have been appointed to S.S Peter and Paul Ellesborough. **The first recorded is Thos. De Bardeney in 1223.** He was not here for long, his successor Alanus De Bermingham was appointed in 1225.

What sort of a church and people was Thomas to serve? Well, there is no record of the church building at that time. The present building dates from the 15th C but there was a much earlier religious foundation in Ellesborough. It is said that traces of a Norman apse were found under the chancel in late Victorian times. Whatever building there was, it was on the same very prominent position as the present building. Projecting out from the escarpment of the Chilterns with its dominant view across and seen from the Vale right on the ancient Icknield Way, it was likely to have been a symbolic and sacred spot from pre-historic times.

The population of Ellesborough calculated from the Domesday Book records in 1086 was around 200, so probably by Thomas's time somewhat more. It was a community of two or three wealthier families from the manors, tenants, villagers, small holders and possibly slaves.

Compared with present day village life, to survive and to prosper in their medieval agricultural economy, communal and cooperative work in an orderly society was essential. Everyday life was dominated by the changing seasons, un-seasonable weather, crop failures, human and animal disease predicted feast or famine. The demands of ploughing, sowing, harvesting, animal husbandry, shelter and storage were unrelenting. Myths, superstitions and magic were powerful.

Central to the lives of this community was the parish church. We can imagine the flow of people up the network of footpaths linking all corners of the parish, paths we are so familiar with today, and packing into the small building on Sundays and to record and solemnise marriages, births, deaths and to celebrate the great Festivals and Harvest Home.

In the world of today we face numerous serious challenges, different in so many respects to those who lived before us in this parish. We have a different sense of community, much of our focus lies outside and we are a more individualistic society. Yet there still is a local community spirit as we found when life gets difficult, as in the Covid pandemic caring for our neighbours, when we combine to litter pick, celebrate Royal Jubilees, support and organise charitable activities, save our local pub, care for our playing fields, defend our environment and gather for Remembrance services.

Our predecessors in 1223 would have had no concept of lives so incredibly more secure physically and advanced materially than of ours today. Yet we can sometimes understand and share their anxieties and fears when things get difficult, can feel the value of community in uncertain times.

The church at the top of the hill is a powerful symbol of community and continuity with the past the present and the future. We can pause and sense within its walls those countless generations who sought and found solace and strength through their faith. It was built by and is maintained by and for the people of the parish. It continues to exist for the same purpose that it always has.

Tony Young

Chocolate Pavlova with Spiced Pears

Looking for an “easy & quick to make” dessert for Christmas? Pavlova is a timeless classic but with an infusion of chocolate and topped with spicy pears – this seasonal alternative will impress your guests. Spiced pears are also great on their own, with cream.

Ingredients: Serves 8

Pear topping:

6 small pears, peeled
500ml (2 cups) maple syrup
5cm piece of root ginger, sliced (or a cinnamon stick)
6 bay leaves

Method:

1. **To make the spicy pears:** place pears, maple syrup, ginger, bay leaves and 3 cups (750ml) water in a saucepan. Bring to a simmer over medium heat, then cover surface with a circle of baking paper and reduce heat to low. Simmer for 40 minutes or until tender

2. Remove pears from liquid.

Discard half of the liquid, reserving bay leaves and ginger. Return remaining liquid, bay leaves and ginger to a deep saucepan and place over high heat. Boil liquid for 30 minutes or until thick and syrupy. Cool completely, strain and set aside

3. **To make pavlova,** preheat oven to 150°C and line a baking tray with lightly greased baking paper. Draw a 25cm circle, on the paper, as a guide. (Alternatively, make a 22x35cm oblong pavlova or individual pavlovas)



Pavlova :

330g (6oz) castor sugar
6 egg whites
1 tsp vinegar
1 heaped tsp cornflour
1 tsp vanilla essence
2½ tblsp cocoa powder
500ml sour cream (or double/whipping cream)
1 tblsp icing sugar sifted

4. **Place egg whites in the bowl** of an electric mixer. Whisk until whites are very stiff and gradually add the sugar, a tblsp at a time and beating between adding each spoonful. Fold through vanilla, vinegar, cornflour and 2 heaped tsp cocoa.

5. **Spread meringue out** to the 25cm prepared tray. Scatter over another 2 tsp cocoa and using a palette knife, swirl through meringue.

6. **Place pavlova in oven** and reduce heat to 120°C. Bake for 1 hour or until crisp, firm and dry. Turn off oven and cool meringue in oven with door ajar for 3 hours or until cooled

completely.

7. **Combine sour cream,** icing sugar and remaining 1 tbs cocoa in a bowl, then spread over pavlova. Halve pears and arrange over the top. **Serve drizzled with reduced maple syrup and scatter with bay.**

**IF YOU HAVE A FAVOURITE SEASONAL RECIPE,
AND WOULD LIKE TO SHARE IT THROUGH THE MAGAZINE:**

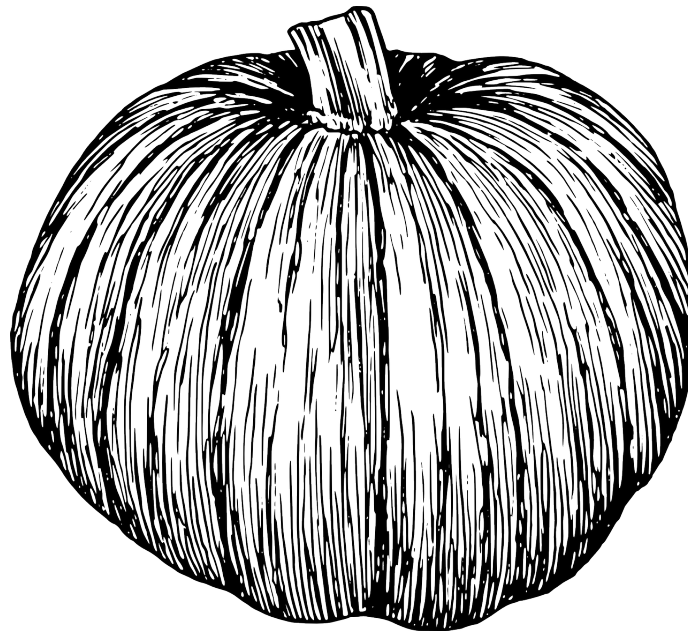
CONTACT: Judith Harper 01296 622033. jd25.harper@gmail.com

Gardening in Ellesborough

Days slip by as this autumn lingers on. Intermittently cloudy wet and dismal, then transformed by dazzling sunshine that brings out the glorious colours. Temperatures are remarkably mild still now in mid -November. Through sombre All Saints Day and Remembrance ceremonies, and still not a sign of frosts. Which is just as well as only a touch of domestic heating is needed as we conserve energy against the ominous costs of fuel and threats of shortages loom amid general national gloom.

A welcome bonus is how some **summer flowering plants join with some winter and even early spring plants in putting on an extraordinary show.** There is Cosmos, winter flowering Jasmine,

Marigolds, Roses, Delphiniums and Primroses and much else lighting up all over the garden. With the heavy rains Dahlias have slowly come into their own and are now putting on a good show after being held back by the great summer drought. Some shrubs like the highly scented Daphne are flowering as if it were spring time. On the down side, we wait to see just how much damage the extraordinary summer heatwave and water less weeks have done, already a Cornus Sibirica is looking especially sad, it may spring before we know how well it recovers. The grass restored with renewed vigour.



Leaves are dropping but not yet a full -blown fall. It seems like a pause before we descend into winter. Many plants are dying back and there is a temptation to relentlessly cut back and tidy away. Some has to be done and weeds kept at bay but insects and wild life generally need winter protection and birds feed from teasels and other seed heads. Some over dominant shrubs and tree branches are being cut back.

Advantage has been taken to have a major clear out of the ponds as water fell to the lowest levels we have experienced, although some topping up was possible from the well, nothing was added from the mains with the hose-pipe ban. The debris has been used as a mulch on the banks and around some borders and thuggish weeds removed. The Head Gardener (HG) has split some of the over-grown

water lilies and they are being planted to extend surface cover.

Not sure how much longer this mild weather will last; as always there is still much to be done. **It is good to be able to get out and active before whatever the winter weather throws at us.** Gardening is nothing if not pure optimism and looking forward. Right now, it is planting spring bulbs in pots, "as if we did not have enough already" as the HG pointedly says.

TY November 2022

ELLESBOROUGH GOLF CLUB

BEGINNINGS

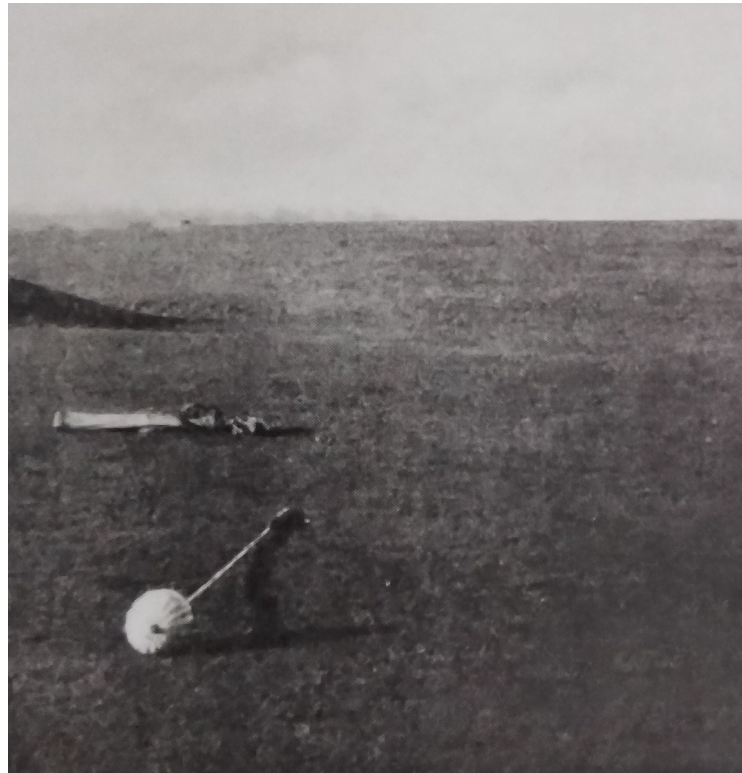
It took some time for the Royal and Ancient sport of golf to reach Ellesborough. The game had been played on the east coast of Scotland since the Middle Ages but it was only in the 17th century that the first clubs were formed with Blackheath, founded in 1608, being the oldest English club. In the late 19th century increased wealth, railways, leisure time and a burgeoning middle class led to the sport becoming hugely popular and the majority of British clubs date from this period. Buckinghamshire in general was fairly slow off the mark and it took the further accelerant of the extension of the Metropolitan line in the 1890's to get things moving with halts added at Denham and Beaconsfield specifically to serve their new golf clubs.

In 1905 a 'circular letter' was sent to a number of gentlemen in the Ellesborough area suggesting the establishment of a local club and this led to a meeting at Coombe House, the then home of Sir John Walton, Barrister and Attorney General to the Liberal Government, on the 30th of December 1905 at which it was agreed that a new local golf club should be founded. Various sites were inspected and the options were quickly reduced to two on either side of the road from Butlers Cross to Chequers with a local golf professional advising the advantages of the more sloping site between what was then the schoolhouse (now the Guide Centre) and Coombe Hill.

COURSE LAYOUT

At the time, this was then a tenanted section of the Chequers Estate, and after lengthy negotiations with the tenant farmer a

Mr Mortimer, it was agreed that he would give up the tenancy of the land and his farmhouse in September 1906 after which he would assist with the creation of the course, act as Caretaker for the Clubhouse (with his wife providing the catering) and become the



Post Card Ellesborough Golf Course - 1920

new club's first Greenkeeper. With negotiations completed, Lord Buckinghamshire (who had been elected as the first president of the club), and Sir John Walton, signed a 21-year lease with the Chequers Estate. Scottish golf professional and two-times Open Champion Willie Park Jnr. was then appointed to lay out the 9 holes of the course (at a fee of 10 guineas) and Mr Mortimer immediately set to work to create the course with a newly-purchased horse-drawn mower and roller. At this stage of its evolution the course had no bunkers and

A HISTORY Part 1

wattle hurdles were initially erected here and there to act as hazards.

ORIGINAL MEMBERS

The club now urgently needed new members to relieve the financial



commitments of its founders who had bought advance subscriptions in the sum of £100 each to get things moving (which was no small sum in 1906). A first AGM was held at the Red Lion in Wendover (the scene of all the club's AGMs until 1961) and it was agreed that they would aim for 100 male and 100 female members with the annual subscription set at 2 guineas (with wives, daughters, sisters and nieces of male members offered a reduced subscription of 1 guinea). There were no ladies present at the meeting (and indeed the lady members would have to wait another 90 years before they were finally granted voting rights). A

club professional was appointed whose duties included collecting green fees, supervising the local boys who had volunteered to act as caddies and assisting Mr. Mortimer with the maintenance of the course. Soon all was ready for the start of play and the club was officially opened on the 13th of October 1906 with the Earl of Buckinghamshire driving the first ball from the first tee (now the seventh) with a light luncheon of sandwiches provided afterwards in the new clubhouse. This was then undergoing conversion to provide dining and changing accommodation for members as well as stabling for the club's horse.

LADY MEMBERS

Perhaps surprisingly, at this time there were three times as many lady members as men, largely as a result of the number of wives and daughters who had taken advantage of the reduced rate and the male members were strongly encouraged to seek further new recruits as the club was still relying on its founders' loans. By 1907 the club had elected both men's and ladies' captains, was holding regular competitions and competing home and away against other nearby clubs and in 1908, amidst great excitement, the first of the course's bunkers was created. Financial pressures continued however and, in an attempt to save money, the horse was sold and it was agreed that the course would be grazed by sheep (with their owner compensated at a rate of £4 a sheep if any were killed by golf balls). This cost-cutting arrangement was concluded just a year later, as the sheep were doing so much damage to the new greens.

By the time of the AGM in 1910, the club's finances were on a firmer footing, with the

ELLESBOROUGH GOLF CLUB



Grass Cutting - Ellesborough Golf Course - 1920s

total membership of the club up to 146 and an increasing number of visitors now providing additional income (as a result of Ellesborough's entry in the Golfer's Handbook and Yearbook and its inclusion in the various Railway Company Guides). Improvements to the clubhouse continued and in 1912 member Mr. I Walton offered the club a number of African animal heads, which he had shot himself, but after due consideration, his proposed decorations were declined. By now Mr Mortimer was encountering the perennial problem of all Ellesborough greenkeepers – a lack of water to effectively maintain the course and a 15,000 gallon tank was bought and erected where it could catch the rainwater from the clubhouse and store buildings. Bunkers now proliferated the course, no doubt much to the chagrin of members (then and now).

CHEQUERS CONNECTION

The outbreak of World War One in the August of 1914 brought the club's next financial crisis with many fee-paying members volunteering and resigning their memberships. The club horse was sold once more and the sheep returned to graze the course with the rough being grown long, to sell for hay. By 1917, membership was down to 98 and in 1918 the club was asked if they would provide temporary membership to members from Whiteleaf Golf Club, as they were now unable to maintain their course. Just before the end of hostilities, Lord Lee (who had been renting Chequers since 1909) bought the house and estate and simultaneously gifted it to the nation as a country house for future Prime Ministers, as he recognised that most could no

A HISTORY Part 1 continued

longer be expected to have their own estate. In 1919, a new 42-year lease was agreed with Lord Lee, and it was also agreed that 'the occupant' of Chequers would be given the right to play the course free of charge.

The first Prime Minister to accept the privilege was David Lloyd George who became an honorary member in 1921 and who played occasionally before being

succeeded in 1922 by Bonar Law, who hardly had time to tee up a golf ball before he in turn was succeeded by keen golfer Ramsey MacDonald in 1923 – nice to know that some things never change!

To be continued in the next issue...

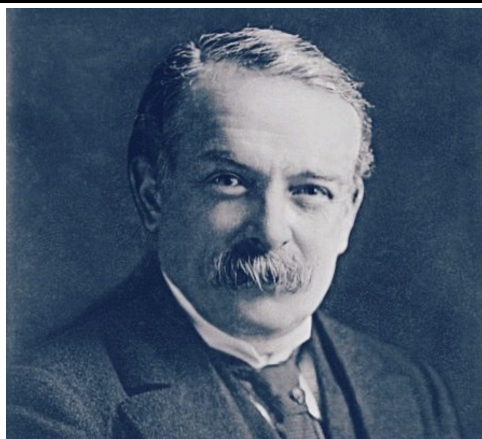
JOHN STEWART

The Fourth Fairway - 1920s



Golf is the only game where the worst player gets the best of it. He obtains more out of it as regards both exercise and enjoyment, for the good player gets worried over the slightest mistake, whereas the poor player makes too many mistakes to worry about them.

David Lloyd George



CHILTERN BREWERY

On 25th May this year, the last 30 feet of both brewery barns yielded their ground as the first phase of our **rebuilding and upgrading of the brewery** began. Our established pattern of brewery life was going to change; but then it needed to!

It took only slightly longer for the penny to drop than it did for the walls of our barns to fall, to see that it was never an evenly matched contest. **In about 45 minutes, 45 years of family life was gracefully dismantled** as the JCB pushed, pulled, and knocked those sections of our old barns down.

Sometime in 1972, arriving by lorry as a flat-pack kit, the barns would have been put up swiftly, bolted together and made ready for use. In 1977, the old open-fronted barn, filled with straw bales had been a play area, castle, climbing frame and hiding place for my brother, Tom and I. Later, it became a holiday let with wide views stretching up to Coombe Hill. The day before demolition, it was a full storeroom for the brewery.

Ever adaptable, ever changing and yet never looking very different, they had been part of our family and brewery life for nearly a half century. But the towering 22-ton JCB digger made short, neat, if unceremonious, work of them. They were flat again, packed up onto the back of a lorry again, and carted away.

At the end of a rather precise arc spanning 50 years, they were gone; the ground was again clear, ready, and waiting.

The beginnings for this were 2015, when two things became clear. The barns would not last forever and - thanks to your enthusiastic continued support - we were close to brewing capacity and running out of room. We agreed that we wanted and needed to make the most of the spectacular location we have and for

this to be reflected in a new brewery. A purpose-built showcase brewery. We wanted it to nod to the past while looking to the future, all within the footprint of the original barns.



Artists Impression - Phase 1

By the end of 2019, we had everything agreed, prepared, and arranged, and work was set to start in 2020, but lockdowns and restrictions throughout 2021, meant we had to reshuffle our plans swiftly, adapting to a different landscape and

REDEVELOPMENT NEWS

timescale! Consequently, **phase 1 began a little later, in Spring of this year.** In April, the machinery rolled up our yard and the contractors would hand over the completed barn in the Autumn.

So it was that in **May this year, our view of Coombe Hill, framed by the barns for 42**



- colour version page 38

years, changed.

Once the foundation was poured, the steel frame was set to rest on it, and each day from then on, the build, as we called it, looked different. The British Steel frame went up on

the double, looking lean and elegant. New posts and beams with railings to fix the cladding to, stood out like a silver ribcage.

The contractors roofed one half, then the next and then added the wall cladding, at which point all work appeared to stop, outwardly. Our game became interpreting the sounds that we could hear – drilling, hammering, and whistling.

On the odd occasion, the foreman would call us inside to let us know what was happening next, ask us questions and seek our agreement. Electricians arrived, followed by plumbers, glaziers, and door fitters, who each took their turn. And then, at the end of August the specialist flooring company arrived. Four men had four days to spread 14 tons of screed and then lay 4 tons of brewery-specific tiles. They were mesmerizing. Watching them tile was like watching cards being dealt; no machines, just nimble, skilful movements learnt from years of experience.

The purpose of the barn though, is to **house a bigger, better brewery.** One that would help us meet demand and improve our brewing processes, use the best techniques and equipment.

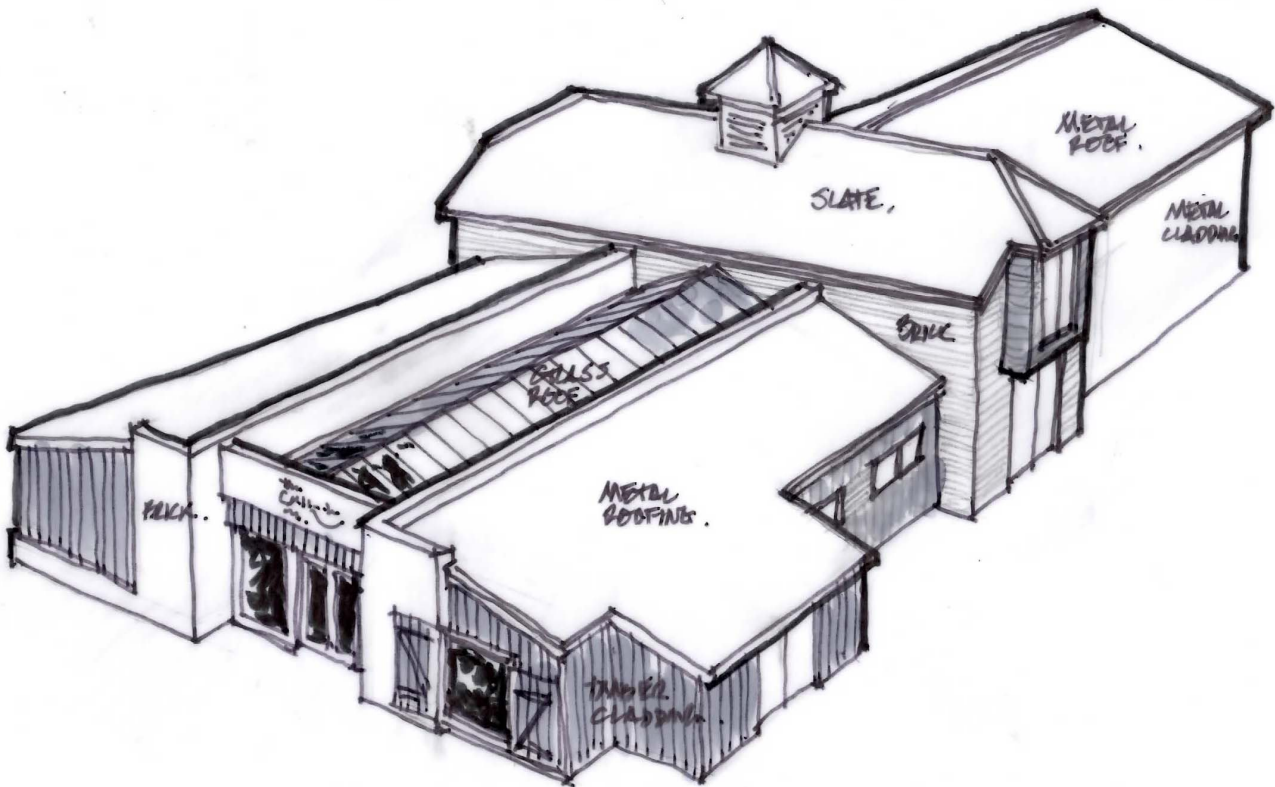
Today, we are preparing to take delivery of four, new 7,500 pint fermenting vessels. They are being fabricated on the England/Wales border and last week, we were able to visit the fabricators, to see them working on ours. These vessels will immediately increase our brewing capacity, helping us fulfil demand and give us the flexibility that we have needed. By the time you read this, we will be working out how to manoeuvre them into the barn and then into place!

These vessels will herald the beginning of the end, of phase 1. **In December, the vessels**

CHILTERN BREWERY Contd

will be connected to the existing brewing pipework and commissioned and in January, we will begin brewing with them. The brewhouse, when that phase is complete, will be behind glazed panels in the heart of the brewery, visible directly from the brewery

in brewing. This is tremendous news and we are very excited to be able to use now, 100% Bucks grown barley in our beers. This alone is worth raising a glass to! (Well alright, perhaps two!)



Artists Impression - Completion

shop. Once all the phases are complete, we will have a showcase brewery – almost unique in its style in the UK.

Whilst we have been preparing and breaking ground with phase 1, we have also been at work on developing our local sourcing.

We are delighted to announce that we have been working with Waddesdon Estate farms to secure malting barley, which they have grown on their farms specifically for our use

We would all like to thank you for your continued support, it does mean a lot us.

Cheers for Christmas and New Year, from Tom and I and all of us at the brewery!

(by George Jenkinson)

AWARD WINNING SWEENEY'S

Sweeney's Budgens has won two leading national grocery awards; The Convenience Awards - Community Retailer of the Year 2022 and The Retail Industry Awards 2022 – Independent Community Retailer of the Year.

The judges were impressed by our strong offer of local artisan and independent suppliers that we stock and how these products are so suited they to the local community. We support a wide number of local charities, typically offering prizes for local fundraisers. We have a couple of organisations that we have long ongoing relationships with; **PACE, which help children with motor disorders and MASKS who support children with Special needs.**

We offer Work Experience to several local schools and for many years we have supplied all the kit for Wendover Football Club. We are also the primary local collection point for Chiltern Foodbank.

The competition judges were bowled over by how the store worked with the local community to provide international aid.

Encouraged by the local community's success in housing a Syrian refugee family, Sweeney's Budgens used this model to provide a flat for an Afghanistan family. They worked with **Buckingham Council through the Afghan Relocations and Assistance Policy and provided a two-bed flat to a refugee family.** One of our customers put them in touch with a furniture supplier who donated all new furniture.

In February 2022, a local group organised to send urgent aid to refugees fleeing Ukraine. The care boxes provided emergency overnight packs for children fleeing to safety. The community donated clothes and shoes –

and Sweeney's Budgens supplied toiletries and children's activity magazines. While very proud of this little project, the store team were determined to do more to help Ukraine.

You Give, We Give appeal to raise money for Ukraine was set up and nine other independent Budgens retailers then joined the campaign. Customers were asked to purchase any blue and yellow symbolic cans and we would match the donation.

The first **£15,000 was donated to British-Ukraine Aid**, a UK charity that supplied emergency medical support. The remainder of **£140,000 raised was spent on food aid** purchased at cost from manufacturers.

The first articulated lorry of food aid was transported by Support the World in June. They sent the aid to Poland for onward distribution to Ukraine. Officers in RAF Halton suggested Chernobyl Children's Lifeline would be a worthy charity, so they shared the aid with Support the World.

To get the second artic of food to Kharkiv we had to overcome many obstacles, but with the help of the Ukraine and Polish Embassies and a wonderful logistics company Manfreight (who transported the goods for free) the humanitarian **food aid arrived for distribution by Kharkiv local government on 26 October 2022.**

Thank you all for your ongoing support and we are delighted to accept the awards on behalf of the community.

All The Team, Sweeney's Budgens, Wendover.

STOKE FARM



Richard Pearce (Antony's dad)

Stoke farms has been run by the Pearce family for three generations. The family's farming legacy started in the 1930s with Antony's Grandfather Dick (fondly known as Tricky Dicky) running a milking herd and a retail milk round. As the milk round diminished, Grandmother Eva, moved into poultry and with the help of Dick's son Richard and more recently Antony, the turkey enterprise has expanded.

As well as free range Bronze Turkeys, the farm features arable land, producing wheat for Weetabix, barley for Budweiser and milling wheat for Warburtons bread. This side of the business incorporates regenerative agriculture principles, a driver behind planting our Sloe orchard and our practises to support pollinators. The berries are used

in our flavoursome Sloe gin, perfect on its own or in a glass of fizz.

There are also our beehives, producing sweet honey and beautiful handcrafted candles, which have a wonderfully pure, calming scent. But that's not all we do, we offer secure storage on our site, with controlled access for added security. Featuring 20 and 40ft containers, ideal for long and short term storage.

So whether you are looking for a Christmas feast, a seasonal tippie or some extra space, give us a call!

Tel: 01296 612448

PEARCE FAMILY TURKEYS

Succulent Turkeys for over 50 years

Taking orders for Christmas now

Our free range Bronze Turkeys are of the highest quality, finish, flavour and texture. Reared using traditional methods to the most stringent of welfare standards, you can be confident that a Pearce Family Turkey will delight your family and friends at Christmas.



www.farmgatetoplate.co.uk

Moat Farm, Marsh Lane, Stoke Mandeville, HP22 5UZ

01296 612448

BUCKMOOREND FARM

What is inside ?



BUCKMOOREND FARM XMAS HIGHLIGHTS



KIDS CHRISTMAS PUZZLE



Christmas Joy

DIRECTIONS: Fill in the crossword grid with the provided words.

4 Letter Words
BELL
SNOW

5 Letter Words
ANGEL
COCOA
ELVES
HOLLY

6 Letter Words
LIGHTS
SLEIGH
TINSEL
WINTER
WREATH

7 Letter Words
CHIMNEY
GARLAND
PAGEANT
RUDOLPH
SNOWMAN

8 Letter Words
CAROLING
DECEMBER
EXCHANGE
ORNAMENT
PRESENTS
REINDEER
WRAPPING

9 Letter Words
CHESTNUTS
CHRISTMAS
EVERGREEN
FRUITCAKE
MISTLETOE
NORTH POLE

10 Letter Words
POINSETTIA
SANTA CLAUS

11 Letter Word
GINGERBREAD

Rudolph the Red-Nosed Reindeer

DIRECTIONS: Find and circle the vocabulary words in the grid. Look for them in all directions including backwards and diagonally.

BLITZEN
BRIGHT
CHRISTMAS EVE
COMET
CUPID
DANCER
DASHER
DONNER
FAMOUS

D	A	N	C	E	R	Q	C	R	E	C	N	A	R	P	N	Y	I	H	Q	K
B	S	B	L	I	T	Z	E	N	S	E	M	A	N	G	N	J	S	Q	L	A
A	M	K	L	A	H	T	L	J	C	B	X	M	A	I	H	G	I	E	L	S
Z	C	V	D	H	L	S	G	K	H	R	E	M	H	J	V	Z	U	P	N	H
V	H	U	E	C	D	E	M	P	R	L	E	S	J	B	O	S	F	Y	G	D
R	E	Y	B	S	U	Z	U	W	I	S	E	J	S	I	C	P	E	Q	I	P
C	A	U	O	X	V	G	S	Y	R	C	F	N	P	R	E	B	C	R	T	
F	K	G	N	H	I	L	D	F	T	H	M	O	D	J	L	U	V	A	H	T
C	T	C	D	G	X	M	R	E	M	S	U	G	R	G	U	C	O	G	S	J
V	X	F	E	B	E	T	M	M	A	A	O	U	S	Q	Y	H	I	V	K	C
D	Z	V	R	G	N	O	Q	N	S	O	J	J	T	B	O	R	A	P	U	A
C	P	L	W	X	C	Q	T	X	E	G	L	O	W	B	B	K	N	D	Y	
Q	R	M	O	A	S	A	B	L	V	E	R	A	C	I	Z	P	F	F	R	R
R	E	E	D	N	I	E	R	P	E	S	E	A	U	G	H	Y	G	O	E	
N	N	V	Q	Q	V	Z	Q	X	M	O	F	I	L	O	V	E	D	H	T	H
B	N	Z	Y	Y	S	G	Z	F	X	N	D	F	K	J	X	T	R	P	S	S
F	O	E	L	A	U	G	H	C	Y	R	C	Z	H	J	N	O	P	L	I	A
A	D	O	R	I	O	A	L	G	L	P	X	N	D	I	P	U	C	O	H	D
H	C	D	D	S	M	Z	G	E	S	P	I	F	W	V	H	U	Q	D	D	T
B	M	E	I	M	A	O	I	K	H	K	I	B	D	V	B	V	R	U	F	V
G	P	O	B	T	F	K	K	V	U	A	K	L	L	C	M	A	R	R	C	A

FOGGY	NOSE
GAMES	PRANCER
GLEE	RED-NOSED
GLOWS	REINDEER
GUIDE	RUDOLPH
HISTORY	SANTA
LAUGH	SHINY
LOVED	SLEIGH
NAMES	VIXEN

Christmas Connect the Dots

The puzzle consists of two parts: a reindeer's head and neck (top) and a gift box (bottom). The reindeer's head is formed by connecting dots numbered 1 through 71. The gift box is formed by connecting dots numbered 1 through 71. The gift box has a holly leaf on its side.

Can you spot the 10 differences?

The differences between the two illustrations are:

- The dog is a pug in the bottom illustration, not a golden retriever.
- The cat is a grey tabby in the bottom illustration, not a ginger and white.
- The man in the red shirt is holding a gift box in the bottom illustration.
- The woman in the red dress is holding a gift box in the bottom illustration.
- The child in the red shirt is holding a gift box in the bottom illustration.
- The child in the red dress is holding a gift box in the bottom illustration.
- The child in the red shirt is holding a gift box in the bottom illustration.
- The child in the red dress is holding a gift box in the bottom illustration.
- The child in the red shirt is holding a gift box in the bottom illustration.
- The child in the red dress is holding a gift box in the bottom illustration.

DUNSMORE NEWS

What Will Winter Bring to Dunsmore?

Dire warnings about financial and climactic disruption are falling on everyone's ears, as the Government budget is about to be announced just as our deadline approaches. Will we be struggling

In October, the **Annual General Meeting** was held in the Village Hall. At the end of his two-year term in the chair, Julian Hamer stepped down, and Tod Weller (of Well Cottage) was elected to replace him as Chairman. The committee was given a huge round of thanks for their hard work for the year. Julian will stay on the committee as Events Secretary, Ivan Stillwell remains Treasurer. Nikki Stillwell agreed to continue as Secretary, and the Minchens (Chris and



with historically energy prices? Is another wicked weather phenomenon on the cards? We are all fortunate to live in such a beautiful place, well above potential flood levels, but exposed to some very wild winds. We know that our community will rally around any villagers who might need a hand, whether with the snow and ice rota on our hilltop roads, or any possible inflation or recessionary issues. We are here for one another.

Alice) will stay on the Committee (one vote between them), along with Lorraine Smith and Vanessa Havard. The latter will continue to be Bookings Secretary. The three DVHA Trustees continue to include Julian Hamer and Ivan Stillwell, who are joined this year by Andrew Swift.

Halloween activities for the younger generation this year again included the Pumpkin Carving Contest and a

DUNSMORE NEWS Contd

Halloween Party and **Trick-or-Treating** through the Village. Eighteen scary monsters partied in the Village Hall – and heard a Very Scary Story. Games involved eating donuts without using hands, finding eyeballs in slimy worms and trying not get their faces into a dish of flour! – before they ventured out on their rounds. Fifteen brave residents opened their front door to the troupe .

The **Pumpkin Carving Contest** was won, once again, by Rose Cottage, with one of the scariest jack-o-lanterns ever seen in Dunsmore! Moonrising again came in second, tied with Field Place. Third prize went to Far-Ben. Many thanks to Andy Charles for his judging efforts. We have real champions here!

On November 19 th , Dunsmore’s annual and Chips challenge took place in the hall. Unfortunately, our deadline precludes us from announcing the winning team, but it must be said that the brains of attendees will have been well and truly tested by **Quizmaestros Julian Hamer and David Marshall**. Teams were determined on a different basis this year. Rather than villagers choosing their own teams, team members were allocated to larger teams, on a more mixed basis.

After a very long battle with mesothelioma, **Alan Smith**, Rylstone, died at home, surrounded by his family, on October 17 th . Alan celebrated his 70 th birthday in June, a very happy occasion, with many, many friends



Alan Smith

DUNSMORE NEWS Contd

and family joining the festivities. A committed and loving family man, Alan worked hard (and played footie hard) all his life. He was a long-time Spurs supporter. And he always had a smile on his face, even during the last months of his life. Our thoughts are with his wife Lorraine, his strength and support, at such a difficult time for the family.

On the evening of December 3rd, 18

villagers will make their way to **The Mill at Sonning** for an evening out. Dinner will be followed by a production of the widely acclaimed

'Top Hat'. Perhaps this will be the first in a revival of theatre evenings for villagers. These events have always proven popular.

Many thanks to Tina Edmonstone, who is organising a **Christmas Wreath Workshop** in the Village Hall. It will take place on December 8th, from 7.30 p.m. As space is at a premium, and supplies will be provided, please reserve your place with Tina at Dunsmore Lodge. Cost is £20 per person, with any profits going to the DVHA.

The annual **Christmas Ladies' Lunch** will be held in the Village Hall from noon on, December 15th. As usual, the event will be catered by attendees, so anyone

who wishes to join the festivities should contact **Vanessa Havard** for the menu and the opportunity to offer a special dish. The traditional turkey and trimmings will be served, followed by some games, not too embarrassing, of course, with prizes! Please join in, whether or not you have come to lunch with your neighbours previously. As always, it's the more the merrier! Menfolk: if you would like to join others in the village for

a **Men's Pub Lunch on the 15th**, Vanessa will make reservations for your Christmas treat. Responses quickly, please!

Lynne Ladd



CAROL SERVICE

CHURCH OF THE
RESURRECTION

11th DECEMBER 2022

4.30pm

Mary Thompson

Chiltern Ladies: Oberammergau, and the Passion Play.

In September, three of The Chiltern Ladies who are also Ellesborough Church members went to Germany to witness the Oberammergau Passion Play.

Oberammergau is a small town in the Bavarian Alps known for its traditional wood carvings, beautifully frescoed buildings, and of course, the Passion Play.

According to legend an outbreak of Bubonic Plague in 1633 devastated Bavaria. The village of Oberammergau remained plague free until a man returning home from work in a neighbouring village brought the disease with him. Over the next month 81 villagers would die, almost half the population.

The people made a promise to God that if he spared the village they would forever perform a play depicting the life and death of Jesus, every 10 years. No more deaths occurred. The following year the village fulfilled its pledge for the first time. The play was performed on a stage built in the cemetery above the graves of the plague victims.

The play tells the story of the Passion of Jesus, from his journey to Jerusalem to his crucifixion and resurrection, and is the longest running play known, and one of the worlds most significant amateur dramatic performances. Today it is performed on the world's largest open-air stage seating an audience of 4,700. Around 2,000 people take part in the play, almost half of the total population, all of whom must either have been born in Oberammergau or have lived there for at least 20 years.

It was absolutely wonderful. The orchestra and choir were magnificent. I counted 60 choir members on stage, and numbers were apparently depleted this year because some did not agree to be vaccinated against Covid so could not take part. There were several children on stage, also horses, a donkey of course, sheep, goats, camels, pigeons and doves, it was a truly amazing spectacle.

The performance lasts for over 5 hours, in two sessions, with a 3 hours interval, when, included in the £120 price ticket, a wonderful early dinner is served in several venues nearby. We were very lucky and enjoyed a lovely meal, the best of our stay in Germany! There was also time for a look around the town and to enjoy some early Christmas shopping.

Our time in Bavaria also included a cruise on the beautiful lake Ammersee to visit the Andech Abbey, visits to the fairy tale Neuschwanstein Castle - supposedly the one on which Walt Disney modelled Cinderella's castle, and shy King Ludwig II magnificent Linderhof Palace.

We also enjoyed a day in Munich, shopping in the old town, and we saw, and heard, the famous Glockenspiel - though not necessarily both at the same time!

Elizabeth Hine

Chiltern Ladies

The *October* meeting of the Chiltern Ladies started with one minute of silence in memory of our late, beloved Queen Elizabeth, followed by the National Anthem.

We have 15 new members since we decided to step away from the WI, and four new members stood and told us a little bit about themselves, to help us remember their names. There were also two visitors.

The speaker was Ray Rowson, who told us about Crete and Santorini with photographs of several family holidays spent there. Crete is the largest of the Greek island and the 5th largest in the Mediterranean sea, it is mostly mountainous. A very interesting talk with some excellent photographs.

The Chiltern Ladies enjoyed beautiful autumn colours on our coach trip through the Cotswolds to **Sudeley Castle**. It has royal connections spanning a thousand years and is the only private castle in England to have an English Queen buried within the grounds, Queen Katherine Parr, the last and surviving wife of King Henry VIII. Henry himself, Anne Boleyn, Lady Jane Grey, Queen Elizabeth I and Richard III all played parts in the history of Sudeley. King Charles I found refuge there during the Civil War, but after the War, Sudeley lay abandoned for over 200 years. In 1837 glove making brothers, John and William Dent rescued the castle and began an ambitious programme of restoration. The castle is still the Dent-Brocklehurst family home.

There was so much to enjoy, a fascinating '**Six Wives Exhibition**' which included rare copies of original books written by Katherine Parr. The gardens are beautiful, and have many life size animal sculptures made in various natural materials illustrating the

theme Coexistence. The Chiltern Ladies enjoyed lunch at the castle.

November meeting. The London Group will hopefully join forces with The Conservative Ladies of Aylesbury to **visit the Houses of Parliament**. A larger group may be able to afford a small coach. We hope for a date in the New Year.

The booked speaker did not attend. A 'phone call revealed he had the wrong date in his diary! Our own **Madeline Holmes** stepped forward to tell us about her time as a fashion model. She loved fashion as a young girl but was the eldest of 5 children and so money was short and fashion clothes were not possible. She told her mother she wanted to be a model when she left school, but her mother told her that she would be a shorthand typist!

Madeline married and had two children, and one day found the telephone number of Fraser's Department Store in the Yellow Pages, she contacted them, and was invited to be interviewed for the **job of her dreams**. She said it was nothing like modelling today, she had to supply her own under garments in various colours, plus immaculate shoes, stockings and make up, and pay for her own hairdressing. She said she was paid nothing like the super models earn now, but she loved the work and enjoyed some **happy years on the cat walk**.

The meeting closed at 4 o'clock and members were asked to wear their Christmas jumpers to the December meeting.

ELIZABETH HINE

School News - November 2022



Great Kimble C of E School

Church Lane

Great Kimble

Nr. Aylesbury

Bucks. HP17 9TH

Telephone: 01844 346189

E Mail: office@gkglt.co.uk

Interim Headteacher: Mrs C Lodge

As many local residents will be aware, Great Kimble C of E School started its journey of expansion from an Infant School to an all-through Primary School in September 2019. This involved building two new classrooms and a school hall housed in a wonderful new building that is not only aesthetically beautiful but provides a great learning space for the children. Our expansion is now complete and it a very exciting year for us as we teach our first Year 6 cohort. This academic year will be an exciting year for the year 6 pupils as they take on new roles of responsibility and look forward to Kimble's first year 6 residential trip!

School Houses

This year we have also introduced Houses and with the help of the Great Kimble school community, with a landslide vote, our Houses were named after birds which can be found in Britain. Each House also has a linked colour.

- Eagles (Golden) - Yellow
- Hawkes (Sparrow) - Green
- Falcons (Peregrine) - Blue
- Kites (Red) – Red

Captains and Vice-Captains of each House are made up of Year 6 pupils. On a weekly basis they support all the other children to live out our school values of respect, thankfulness, love, hope, forgiveness and endurance. They will also have the responsibility of leading Sports Day in the summer term, which they are extremely excited about! Each day the children are able to earn Kimble Stars (House Points) when they demonstrate one or more of our school values. These are then totalled at the end of each week, with the winning house cup displayed in the school entrance hall.

Leaders and Mentors

The children at Great Kimble C of E School are also taking on other roles of responsibility across the school. This includes Lunchtime Leaders, who support our youngest children on the playground each day to learn to play a variety of games and assist in resolving conflict with respect and learning our school values of forgiveness. Our new KS2 Reading Mentors are looking forward to using their knowledge in reading to help the children in KS1 develop their skills as well as a love for reading.

Smokey Row

We are so lucky to have a wonderfully supportive parent community, who give their free time willingly to support the school. This term, a group of parents got together, and repaired and updated our outdoor classroom 'Smokey Row'. They spent a sunny Sunday painting the outside walls of the classroom, varnishing the benches and PlayStations and re-weaving the willow tunnel. I am extremely grateful for their support and very thankful to Bill Brown, the owner of the land.

Social Media

This year we have re-launched the school Facebook page which can be found by searching 'Great Kimble School'. Please 'like' our page and share our news so we can celebrate our successes with the local community.

We have so much to look forward to this year and are eager to share this with you soon.

Mrs Lodge, Headteacher

ELLESBOROUGH MAGAZINE 31

Ellesborough Trust - Help in an Emergency

It is likely that we all have friends, neighbours or relatives who live alone and you may be concerned as to how they would summon support if they had an accident. What would they do if they could not reach their telephone or have any way of communicating their distress? You may know people faced with just this predicament.

Fortunately there is an Aid Call service provided by a company called PPP that has been used by the Ellesborough Trust to provide such support. The procedure is simple. The company will install a base unit connected to your telephone line and provide you with an emergency button on a pendant. If you press the button, Emergency Response Centre operators will immediately call one of two nominated friends or relatives living nearby who have been given keys to your house. Should it be impossible to reach them, either your doctor or the emergency services will be alerted. The company representative will explain the operation of the system at the time of installation.

Ellesborough Trust are making this service available to anyone in the Parish who is over eighty. All installation and annual service charges will be paid by the Trust. Why do we think this is an important and valuable service to our community?

* Current users of the service refer to the confidence that it gives them should the unexpected happen.

* There have been occasions when the service has been life saving.

* The unexpected does happen and anyone at 80+ could be at risk.

If you would like to pursue this offer please contact one of the Trustees

Rob Nicholson (612658) Jackie Rysdale (615109) Debra Panikkar (612359) Judith Harper (622033) Peter Tilbury (623427) Len Newman (613120)

The 200 Club - winners since August

August winners

£50 Nicola Golding (Number 36)

£35 Alice Donnachie (155)

£25 B & B Gill £25 (84)

September winners

£50 Paul Couling (98)

£35 Annie Hamilton (128)

£25 Helen Holman (74)

October winners

£50 Margaret Kettle (123)

£35 Peter Tilbury (33)

£25 Suzie Wood (46)

Gill White

Ellesborough Parish Hall MC



The
RUSSELL ARMS
BUTLERS CROSS BUCKINGHAMSHIRE • SINCE 1763

Forthcoming
Events



Food & Drink
Menus



It's that time of the year already! You're planning Christmas get-togethers with friends & family so why not let us take the cooking off your hands, & come to enjoy our festive menu! We have a menu packed with all your favourite Christmas flavours. Tuck into grilled pear with prosciutto ham & caramelised goat's cheese, then dive into some roast turkey with all of the trimmings. Whether you are vegetarian, vegan, or gluten-free, you'll find a dish for you here at The Russell Arms.

2 Courses £27.75 (Under 12yrs £14.00) 3 Courses £32.50 (Under 12yrs £16.50)
(Discount available for groups of 8 + booking on a Monday, Tuesday or Wednesday). Pre-booking required. Call, pop in or visit our website for full details.

We'll also be opening early from 10am on NYD for Brunch, with our Sunday lunch menu available in the afternoon. Keep an eye on our website News & Events for full details.

Our amazing **new Head Chef**, Adam, commented: "What I like about my job is being able to make fresh dishes using homegrown produce. Moogies make sure that I have the freedom of choice when it comes to my dishes, such as using the local butchers & picking seasonal vegetables."

Why not treat your friends & family to a Moogies voucher this Christmas? Our stylish gift cards can be used at any Moogies venue. Just pop into the pub, choose the amount you want to spend & let us do the rest.

Don't forget that we are still hosting our **monthly charity pub quiz** in aid of local charity **PACE**. Held on the first Tuesday of every month, it's a great way to spend time with your nearest & dearest. Get your team together & show your support for a great local charity.

Our **new Manager** Dani & the team would love to welcome you. Here are a few words from Dani, "I love working with people & making a difference & Moogies is big on change & sustainability which is great! We have local fresh produce & beer on our doorstep & are situated at the heart of the community & for me, it's all about bringing friends & family together."

Very best wishes & season's greetings from everyone at
The Russell Arms

www.therussellarms.co.uk
hello@therussellarms.co.uk
01296 624411
2 Chalkshire Road, Butlers Cross, Aylesbury. HP17 0TS

A community of village pubs



PARISH COUNCIL REPORTS

As we head into the winter months and the Christmas season fast approaching, I would urge us all to check in on our neighbours, be it a quick hello over the garden fence or over a cup of tea, at this potentially challenging time.

Parish business continues and recently we held an **Extraordinary General Meeting** discuss the recent planning submitted by **Hastoe Housing Association**. I was pleased to see so many parishioners attend, and also Eddie Bacon from Hastoe.

Eddie was able to provide diagrams and plans of the proposed development, explained how the scheme would work and he was able to answer many questions and concerns raised by parishioners in attendance. Opportunity was given for each parishioner who wished to ask questions, and proxy questions were read out. Each parishioner was listened to and comments were respected, the Parish Council will now take time to consider all the information available to us, to be able to make an appropriate comment. We hope to do this at our **next Parish Council meeting on 21st November**.

I would remind the Parish that if they wish to submit a comment on the Planning portal to do so before the 2nd December. I would like to thank all those who took the time to attend.

We welcome you to join us at the start of our Parish Council meetings for the Open Forum.

North Lee Lane

Our appeal on the decision to apply for traffic calming measures along North Lee Lane was not successful, however we have now had a response

from Councillor Steve Broadbent regarding our concerns.

We have been told that North Lee Lane is on a list of additional repair and surfacing works



HOUSING ASSOCIATION PROPOS

under the Council's £3m "failed road" . These works will require a closure.

New 7.5 tonne signage is to be installed, although we have concerns that these may only at the junction with the A4010.

Work to remove some of the vegetation along the main road is due to be scheduled but weather conditions may affect this.

Replacement bollards are also due to be installed hopefully in the New Year and we

- NOVEMBER 2022

have been asked to think about creating a safe area for those who use the bus stop at the petrol station.



ALS - EGM 14th NOVEMBER 2022

Finally we had asked for a reduced speed limit to be considered, however this would be a long-term plan with processes that would need to be followed.

The Clerk and I continue to meet with Jon Deas and Issy Greenfield to ensure that we can feed back accurate information mostly about lane closures, traffic lights and diversions. We have seen the impact that one set of traffic lights on the A413 has on the village, with drivers trying to find an alternative route.

I would like to thank **Mr Alan Cripps and his volunteers, who man the Speedwatch**, should anyone wish to join the volunteer group, you can contact the Clerk to the Council or Mr Cripps direct. It is important to be seen by motorists that we take speeding in the village seriously, although the winter months are challenging due to the nights drawing in.

A huge thank you to **Janette and Judith** for organising the recent **village litter pick**, it is greatly appreciated and brings the village community together.

Last Sunday saw us remembering the Fallen during the **Remembrance Service** at the Church and also at the War Memorial at the Village Hall, we must never forget their ultimate sacrifice. **I would like to thank Ed who came along to sound the Last Post.**

I would like to thank my fellow Councillors and Clerks, past and present for supporting me during my time as Chairman of the Parish Council. Due to personal pressures I have tendered my resignation as Chairman and we will elect a new Chairman at the next parish Council meeting.

It has been a huge privilege to have been able to undertake the role of Chairman, and I feel honoured.

Thank you all.

A quick reminder to ask you all to join us for Carols around the tree on the 9th December 7pm where we will enjoy a mince pie, mulled wine and the wonderful Ellesborough Silver band. I look forward to seeing you all.

I wish you and your families a very Merry Christmas and a Happy New Year!

Debra Panikkar

Ellesborough Parish Planning Applications

Current, up to 10th November:

- [Proposed householder application for construction single storey extension planning ref: 22/07153/FUL](#)

Meadowbrook Farm Risborough Road Buckinghamshire HP17 OUE

Ref. No: 22/07153/FUL | Received: 04 Aug 2022 | Validated: 04 Aug 2022 Jul 2022 | Status: Application permitted 12th Oct 2022

- [Certificate of lawfulness for existing continued breach of condition 2 of planning permission WR/31/52 for a period in excess of 10 years from the date of this application](#)

- Widnell Farm Rignall Road Little Hampden Buckinghamshire HP16 9PT

- Ref. No: 22/07458/CLE | Received: Fri 09 Sep 2022 | Validated: Fri 09 Sep 2022 | Status: Awaiting decision

- [Certificate of lawfulness for existing use of land for garden which has continuously existed for more than 10 years](#)

- Brockwell Farm Missenden Road Butlers Cross Buckinghamshire

- Ref. No: 22/07449/CLE | Received: Wed 07 Sep 2022 | Validated: Wed 07 Sep 2022 | Status: Awaiting decision

- [Householder application for construction of replacement front porch and single storey detached garage](#)

- Bay Trees Ellesborough Road Butlers Cross Buckinghamshire HP17 OXF

- Ref. No: 22/07303/FUL | Received: Sun 21 Aug 2022 | Validated: Fri 23 Sep 2022 | Status: Awaiting decision

- [Householder application for construction of infill extension, alterations to fenestration and raised deck to side](#)

- Pondarosa North Lee Lane Terrick Buckinghamshire HP22 5YB

- Ref. No: 22/07682/FUL | Received: Wed 05 Oct 2022 | Validated: Wed 26 Oct 2022 | Status: Awaiting decision

- [Erection of six 2-bedroomed affordable dwellings and associated works including access](#)

- OS Parcel 1332 Chalkshire Road Butlers Cross Buckinghamshire

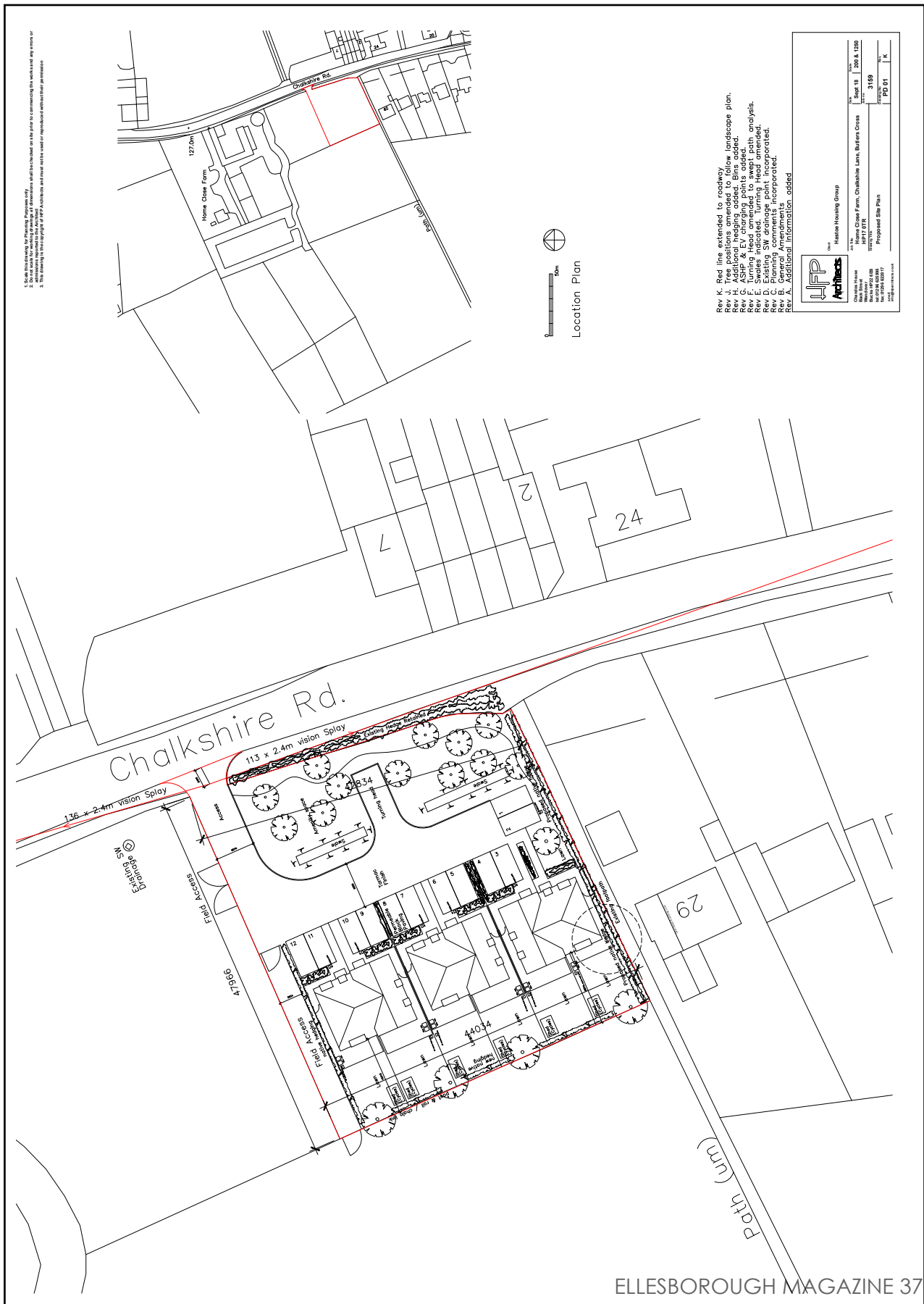
- Ref. No: 22/07562/FUL | Received: Thu 22 Sep 2022 | Validated: Tue 25 Oct 2022 | Status: Awaiting decision

- [Change of use of existing agricultural land to mixed use of agricultural and residential for siting of 24 ground mounted Solar Panels](#)

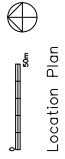
- The Beeches Fox Lane Dunsmore Buckinghamshire HP22 6QH

- Ref. No: 22/07497/FUL | Received: Wed 14 Sep 2022 | Validated: Wed 19 Oct 2022 | Status: Awaiting decision

Affordable Housing - Proposed Site Plan - Chalkshire Road



- 1. To be included for Planning Purposes only.
- 2. Do not use for other than the purposes for which it is intended and do not use in connection with the works or any other work.
- 3. This drawing is the copyright of IFF Architects and must not be used or reproduced without their permission.



- Rev. X - Red line extended to roadway.
- Rev. Y - New landscape plan.
- Rev. Z - Additional hedging added. Bins added.
- Rev. A - ASHP & EV charging points added.
- Rev. B - Additional landscaping added.
- Rev. C - Sweeps indicated. Turning Head amended.
- Rev. D - Existing SW drainage point incorporated.
- Rev. E - General Amendments incorporated.
- Rev. F - Additional information added.

IFF Architects
 IFF Architects Ltd
 100-102 High Street
 Basingstoke, Hampshire RG24 0AN
 Tel: 01256 808000
 Email: info@iff.co.uk

Hedco Housing Group
 Hedco Housing Group Ltd
 Hedco House
 100-102 High Street
 Basingstoke, Hampshire RG24 0AN
 Tel: 01256 808000
 Email: info@hedco.co.uk

Site No: 100/102 High Street, Basingstoke, Hampshire RG24 0AN
 Plot No: 100/102 High Street, Basingstoke, Hampshire RG24 0AN
 Date: 15/10/2024
 Drawing No: 3159
 Drawing Title: Proposed Site Plan
 Drawing Scale: PD 01 : K

Affordable Housing - Proposed Dwellings

1. Scale 1/8" = 1'-0" for Planning Purposes only.
 2. Dimensions shown are approximate and should be checked on site prior to commencing the work and any error or omission shall be the responsibility of the applicant.
 3. The drawings are for illustrative purposes only and should not be used as a replacement without their permission.

Ground Floor Plan
 2 Bed House (West Gate) (Scale 1/8" = 1'-0")
 2 Bed House (West Gate) (Scale 1/8" = 1'-0")

First Floor Plan

Roof Plan

MATERIALS
 Roof: Clay tile
 Walls: Clay facing brick
 Windows: Aluminium

Front Elevation **Rear Elevation** **Side Elevation** **Side Elevation**

Section A **Section B**

Shed / Cycle Store
 Front Elevation Rear Elevation Side Elevation Side Elevation

Street Scene Facing Chalkshire Road

Rev. E. Combined shed / cycle store added
 Rev. D. Bedroom areas added
 Rev. C. Adjacent property indicated. General proposed elevation amendments.
 Rev. B. Planning comments incorporated.
 Rev. A. General Amendments.

JFP Jesse Housing Group		Client: J. J. J.
Project Name: Home Class Farm, Chalkshire Lane, Batters Cross	Site No: 1108	
Address: 1108/1109	Proposed Dwelling Plans & Elevations.	PO: 02 2

Chiltern Brewery - Phase 1 - See Pages 18-20



Christmas at Discover Bucks Museum

We're getting in the festive mood at Discover Bucks Museum with lots of great Christmassy events to suit everyone. We kickstart the season with two special Charles Dickens performances. **First is the Magic of Dickens on 3 December, when Ian Keable, winner of The Magic Circle Comedy Award, in a humorous and mystifying show will reveal the secret side of Dickens by plotting his journey to becoming a magician and recreating many of his tricks.**

Then on 9 December we have A Christmas Carol – an outstanding **one-man performance of Charles Dickens' classic tale of Scrooge told in the author's own words.** Christmas through the Ages on 10 December is a fantastic family event. Have fun discovering what Christmas was like in the Tudor, Georgian and Victorian eras with lots of games, crafts and carols and of course mince pies!

Opening on 26 November, find out how amazing your brain is and how it works in our exciting new hands-on exhibition, **Your Amazing Brain: a user's guide**, which is mind-boggling fun for all ages. With over 15 interactive puzzles and 'mind-bending illusions' we will show you how your brain can play tricks on you!



Your Amazing Brain: "A Users Guide"

There's lots more to discover in our new galleries that tell 200 million years of Bucks history and for hands-on fun the Roald Dahl Children's Gallery is packed with exhibits inspired by Roald Dahl's marvellous children's stories.

Drop into the Museum Shop for a selection of unusual and unique Christmas gifts.

For more information, charges and to book please visit discoverbucksmuseum.org Discover Bucks Museum, Church Street, Aylesbury HP20 2QP



Lindengate's Winter Emergency Appeal

Together, we can help change lives

Please support our appeal now.

In 2022, Lindengate Mental Health Charity has already supported over 1500 people, through visits to our gardens, volunteering and participation in our programmes. We want to be able to continue to support people, but, in this economic climate, need additional funding just to be able to maintain current levels of service. **1 in 4 people experience mental ill health, which could be one of your loved ones.**

We are recognised as a flagship charity in Bucks, but this does not protect us from the enormous pressure that is being put on all charities. We need £2,500 per day to support the 2000 adults and young people who will benefit from being at Lindengate each year. Despite diversifying our income streams and working tirelessly, **Lindengate needs an additional £80,000.**

The need within the community is greater than ever and, with the cost of living crisis continuing to rise, Lindengate can be a lifeline to so many.

Scan to Donate



Click to Donate



www.lindengate.org.uk



LINDENGATE

Lindengate Mental Health Charity
 Aylesbury Road
 Wendover
 Bucks HP22 6BD
www.lindengate.org.uk



Winter Emergency Appeal 2022

In 2022, Lindengate Mental Health Charity has already supported over 1500 people, through visits to our gardens, volunteering and participation in our programmes. We want to be able to continue to support people, but, in this economic climate, need additional funding just to be able to maintain current levels of service. 1 in 4 people experience mental ill health, which could be one of your loved ones.

Together, we can help change lives. Please support our appeal now.

Why support Lindengate?

- Our programmes are a lifeline for local people struggling with mental health
- We have supported 280 young people so far this year, to improve and maintain their good mental health, through nature-based activities
- Since 2021, over 400 NHS staff have been supported by Lindengate through our Nature Connection programme
- Our Memory Pathways programme is a vital service for people living with memory loss and dementia and their carers

- Our community of 200 volunteers benefit from their time at Lindengate and the opportunity to give back to the community. Their contribution is recognised in our Queens Award for Voluntary Service 2022, equivalent to an MBE
- Our 6 acre wellbeing gardens, which are open to all, have been awarded with a Green Flag Community Award 2022, for having one of the best quality community gardens in the Country

We are recognised as a flagship charity in Bucks, but this does not protect us from the enormous pressure that is being put on all charities. **We need £2,500 per day to support the 2000 adults and young people who will benefit from being at Lindengate each year.** Despite diversifying our income streams and working tirelessly, Lindengate needs an additional **£80,000**.

The need within the community is greater than ever and, with the cost of living crisis continuing to rise, Lindengate can be a lifeline to so many.

Donating is easy, you can follow the link [Lindengate Winter Emergency Appeal](#)

or scan the QR code



Patrons:
 The Countess Howe, Her Majesty's Lord-Lieutenant of Buckinghamshire
 The Bishop of Buckingham the Rt Revd Dr Alan Wilson

Better health and wellbeing for all through nature



LIVE-IN CARE TRIAL

Are you considering care options for a relative or even yourself – why not try a live-in care trial to see the benefits of staying in your own home with just the right amount of help to enable you to remain as independent as possible.

Tackling a conversation with a loved family member about their care needs and whether or not, they can continue to live independently at home, is daunting at the best of times but in the current difficult economic climate even more so. However, it is so important to look at all options. Far too many families automatically assume that an elderly relative needs to go into a residential care home when daily tasks start to become difficult, but this is not necessarily the case. In fact, research shows that person-centred one-to-one care in the comfort of one's own home results in far better emotional health as well as physical health. Most people want to remain at home for as long as possible and live-in home care is certainly the oldest and most respected form of social care, just little known in the UK.

The best way to see if it's suitable for you and your family is to give it a try. Ashridge Home Care is a family run independent care business which offers a Live-In Care Trial Service so you can see exactly what it is like having a carer live at home with you. Understandably many people are nervous about inviting a stranger into their home. However, Ashridge carefully matches carers with clients so that not only are their medical and physical care needs met but to ensure that common interests are shared and the all-important underlying values are compatible to live together.

Company founder and local resident Trudi Scrivener commented: *"We often have phone calls from concerned family members telling us they are worried about a loved one but that they*

are nervous about suggesting a live-in carer to stay long term. We recognise that this is a huge decision to be made and cannot be taken lightly, hence we offer a live-in care trial so they can see exactly what the process involves. It is only natural to be nervous about a change in circumstance, so we are trying to reassure people that live-in care is totally tailored to each unique family situation and does not need to be intrusive."

The trial involves a free consultation with a Care Manager, this can be either in person or over the phone, who then puts together a bespoke Care package. The Care Manager sources a suitable live-in carer for you to be matched with and you will be given a detailed carer profile outlining their experience, training qualifications as well as interests and hobbies to see if there is a suitable match. The Care Manager will also offer clear information on costs so you can make a considered care decision.

Trudi continued: *"In the UK there is not a great deal of awareness about live-in care options whereas in Europe the social care system is much more advanced and the benefits for staying at home are well advertised. We often hear from relatives that they think they can't afford a live-in carer but particularly for couples - live-in care can work out cheaper than being moved into a residential care home. Our live-in care trial service gives you the perfect opportunity to see what is involved and if it's for you."*

Abbi - Ashridge Home Care



Ashridge
HOME CARE

Providing Outstanding Home Care

Call for a friendly chat on 01494 917344 or visit ashridgehomecare.co.uk

Ashridge Home Care specialises in providing highly personalised one-to-one care that enables people to remain in the comfort of their own home. It is one of the few care companies to offer both around the clock live-in care or visiting hourly care.

GIFT-GIVING AT CHRISTMAS

Gift-giving has its roots in pagan rituals held during the winter in Europe and the Middle East. Presents were given at winter festivals, including Saturnalia, a raucous Roman festival in honour of Saturn, god of agriculture. It began on Dec 17 when in the cold, dark dead of winter, pagans would lift their spirits by drinking and giving one another gifts. People greeted one another with a

This, together with the story of Saint Nicholas, a 4th Century Christian bishop attributed with many miracles, plus his legendary habit of secret gift-giving, slowly gave rise to the tradition of gift-giving at Christmastide. He was the patron saint of sailors, merchants, archers, repentant thieves, prostitutes, children, brewers, pawnbrokers and students.



1889 Silver Bookmark '**Greetings Xmas 1889**'

joyful 'lo Saturnalia!' - the ancient Roman equivalent of 'Merry Christmas!'

As Christianity became more widespread in Roman lands, New Year's Day became the time for gift giving, but round 336 AD, December 25th was established as the day of Jesus birth, when the Magi brought gifts of Gold, Frankincense and Myrrh.

St. Nicholas became the traditional Santa Claus.

Mike
Antiques at Wendover



Your local radio station for Ellesborough,
Butlers Cross, Terrick and the Kimbles

- ◆ Classic hits and recent releases
- ◆ Local news stories every day
- ◆ Detailed information about forthcoming local events

Monday to Friday

- 7.00 am Red Kite Breakfast** Alan Taberer or Peter Dawes get your day off to the perfect start
- 10.00 Howard Bond** Classic hits, recent releases plus plenty of local information
- 2.00 pm The Afternoon Show** Fine music plus features and chat with Maggie G or Sophie Muncaster
- 4.00 Drivetime** Music and comprehensive local travel news with Peter Dawes
- 6.00 The Gold Kite** An hour of back-to-back hits from the 60s, 70s, 80s and 90s
- 7.00 Monday** **The Seventies Rewind** with Simon Jobling
- Tuesday** **The Nineties Rewind** Classic 90s hits
- Wednesday** **The Eighties Rewind** with Andrew Duthie
- Thursday** **The Sixties Rewind** with Cherry Waller
- Friday** **The Weekend Warm-Up** 90s and 00s dance tracks with Karl Braisher
- 9.00 Monday** **The Musicals Hour** with James Kershaw
- Tuesday, Thursday** **Motown Magic** Classic Tamla Motown hits
- Wednesday** **Red Kite Country** Country hits old and new
- 10.00 Nice and Easy** Relax and unwind at the end of the day with Sally Poulson
- 11.00 Through the Night** Non-stop hits from the 60s, 70s, 80s and 90s

Saturday

- 7.00 am Saturday Breakfast** Your weekend starts here! With Andrew Duthie
- 10.00 The Noughties 'Til Now Show** 20-plus years of hits with Hannah Austin
- 12.00 pm The Saturday Lunchbox** Music across the generations with Heather Jan Brunt
- 1.00 Saturday Sport** Music plus local and national sports news with Peter Dawes
- 5.00 The Funk, Soul & Dance Show** Smooth, cool sounds with Deep Kundhi
- 7.00 Red Kite Party Night** Four hours of classic party hits, with Daryl Ridgley
- 11.00 Through the Night** Non-stop hits from the 60s, 70s, 80s and 90s

Sunday

- 7.00 am Sunday Breakfast**
- 10.00 Sunday Brunch** Classic hits and chat with John Reid-Hansen, including the **Wychert Vale Church Service** at 12.00
- 1.00 pm The Sunday Afternoon Session** with Andy Mitchell, including **The Acoustic Hour** at 3.00
- 4.00 Musicals Hour** with James Kershaw
- 5.00 The Noughties 'Til Now Show** 20-plus years of hits with Hannah Austin
- 7.00 Sunday Rocks!** Three whole hours of classic rock tracks, with Howard Bond
- 10.00 The Breakaway Blues Show** with Graham Andrews
- 11.00 Through the Night** Non-stop hits from the 60s, 70s, 80s and 90s

107.2 FM ◆ Smart speaker ◆ Online at redkiteradio.com

— COOK —

Sweeney's Budgens

“Never had such a carefree Christmas”
Richard



SWEENEY'S
Budgens

Sweeney's Budgens • High Street
Wendover • HP22 6EA

Martin Holman's Pest Control & Services



Qualified with over 20 years experience
Full Public Liability Insurance
Treatments/Prevention for rodents & insects
Domestic & commercial
Quick & reliable service

(M) 07510 290321

(T) 01296 622972

ratman01@talktalk.net

www.martinholmanspestcontrol.co.uk



Create your bespoke
Xmas gift hamper!



Browse our Xmas
display in store now!

Order your home
reared Christmas Meats
while stocks last!

Chequers Estate | HP17 0UT
Tue-Fri 10-6 | Sat & Sun 10-4
www.buckmoorendfarm.co.uk



Inspired Art Classes

ART CLASSES
FOR ADULTS

Next course starts January 2023

Ellesborough Parish Hall

Ellesborough Rd
Butler's Cross
Bucks HP17 0XA

On Fridays

Mornings: 9.30am to 12.30pm

Afternoons: 1.30pm to 4.30pm

be**AMAZED**
at what **YOU**
CAN **ACHIEVE**

www.colourwheelartclass.co.uk
01494 972384

Anthony's Servicing



GAS-OIL-LPG

Service and maintenance of boilers, fires and AGA/Rayburns
Landlords Safety Inspections

Local family run business with over 30 years' experience
Service Plans now available with additional benefits

Office 01296658419 Mobile 07973911674

Website www.anthonyservice.co.uk

Email anthonys.service@gmail.com

Facebook <https://www.facebook.com/anthonyservicing>



Checkatrade.com
Where reputation matters

VILLAGE ENVIRONMENTAL SERVICES DOMESTIC DRAIN SERVICES

Proprietor: Dennis Cook
Est. 1979

**24/7
CALLOUT
SERVICE**

BLOCKED DRAINS?

CALL US DAY OR NIGHT

FAMILY RUN BUSINESS SINCE 1979
BLOCKED DRAINS CLEARED • REASONABLE RATES
NO EXTRA CHARGE FOR EVENING, WEEKEND
OR BANK HOLIDAY CALLOUTS
CCTV DRAIN SURVEYS
FULL PUBLIC LIABILITY INSURANCE



07850 635 844
01296 624 221 (MESSAGES)



AIRS HOUSE

FOR

QUALITY CARPETS

TILES, VINYL & WOOD
FLOORING

DOMESTIC & COMMERCIAL
INSURANCE ESTIMATES
ADAPTION & REPAIRS

Email: sales@airshouse.co.uk

PRINCES RISBOROUGH

TEL & FAX

01844-342546

Station Parade • Summerleys Road

extremeclean.co.uk

Superior Cleaning and Application of Protectors

Carpet, Upholstery, Leather
Modern & Oriental Rugs
Curtains

Tile & Grout/Stone Flooring
Anti-Allergen Treatment
Specialist Stain Removal
Wood Floor Refinishing

Paul Brooker

35 Place Farm Way, Monks Risborough
Bucks HP27 9JJ

T: 01844 346379 / 344735

M: 07866 376934 E: jjjp@uwclub.net

www.extremeclean.co.uk

VILLAGE COMMUNICATIONS

KEEP IN TOUCH

ELLESBOROUGH MAGAZINE

4 times a year

ELLESBOROUGH MAGAZINE ON LINE

ellesborough-pc.gov.uk

PARISH COUNCIL UPDATE

clerk@ellesborough-pc.gov.uk

email clerk to be on list

FACEBOOK - Your Ellesborough

WHATSAPP - Ellesborough Follies - friendly
unofficial group

BRENDAN MCFALL

PAINTER & DECORATOR

INTERIOR & EXTERIOR

MOBILE

LANDLINE

07581 693653

01296 294175



brendanmcfall511@btinternet.com

LOCAL BUSINESSES

Ellesborough Magazine Advertising Rate Card 2022

Quarterly, hand delivered to 500 households in
Ellesborough, Butlers Cross, Dunsmore, Nash Lea & Terrick.

Rate Card 2022:

Page	Approx size	Orientation	1 issue	1 year -10%
Full	A4 (Full page)	Portrait	£53	£190
Half	A5 (notepad)	Landscape	£34	£122
Quarter	A6 (postcard)	Portrait	£22	£79

Yearly Subscription Offer:

Advance payment entitles a 10% discount for all four issues.

Colour Pages:

Plus 20%.

Cover Pages (in colour):

Plus 25%, "first come, first served" basis. Half or full page ads only.

Deadlines:

10th of February for March, 10th May for June, 10th Aug for September, 10th November for December issues.

Contact:

Correspondence to Annabelle Hunting,
Heybote,
Ellesborough Road
Butlers Cross,
HP17 0XF

All copy to ellesboroughmagazine@hotmail.co.uk

ROOF CRAFT

ALL FORMS OF ROOFING
UNDERTAKEN
SPECIALISTS IN
FLAT ROOFING
TILING SLATING LEADWORK

GUARANTEED WORK
FREE ESTIMATES

Mr P N Thomson
71 Grenvill Avenue, Wendover

Tel 01296 624369 Mobile 07889 681828



ELLESBOROUGH PARISH HALL

With the improvements to the village hall, have you considered?.....

A large family party or gathering (secure playground for children opposite)

A new music, exercise or art group

A work hub if you are fed up of working from home – maybe a group of you could have a change of scenery

Playgroups

Table top sales

Charity events

Please make any enquiries to Elizabeth Hine on 01296 625912 or lizziehine@talktalk.net Rates are £15 for the first hour then £12 for every subsequent hour for weekly bookings or £15 per hour for one off events



The **RUSSELL ARMS**
BUTLERS CROSS BUCKINGHAMSHIRE • SINCE 1763

Celebrate With Us...

FESTIVE CHRISTMAS MEAL
2 COURSES £27.75^{PP} (KIDS £14) | 3 COURSES £32.50^{PP} (KIDS £16.50)
AVAILABLE FROM NOVEMBER 21ST. PRE-ORDERING REQUIRED.

SPECIAL PRICE MONDAY - WEDNESDAY
DISCOUNTED PRICE FOR GROUPS OF 8 OR MORE
2 COURSES £24.75^{PP} | 3 COURSES £27.75^{PP}

FOR FULL DETAILS AND TO VIEW OUR MENU, VISIT:
WWW.THERUSSELLARMS.CO.UK/FESTIVE-MENU

BOOK NOW

TEL: 01296 624 411 WWW.THERUSSELLARMS.CO.UK HELLO@THERUSSELLARMS.CO.UK
2 CHALKSHIRE ROAD, BUTLERS CROSS, AYLESBURY HP17 0TS

Looking to visit New Zealand...

For help with creating the best itinerary for you please call or email us

- Experienced Kiwi Specialist Agent
- Friendly, honest advice from an independent travel agency
- Specialists in tailor-making holidays to destinations worldwide
- Extensive experience to arrange every detail
- Using fully bonded tour operators
- No booking fees



Travel Impressions

A World of Experience

01442 890265

enquiries@travelimpressions.co.uk
www.travelimpressions.co.uk

Suite 4, George House, 64 High Street, Tring, Herts. HP23 4AF



Numbers is here to take care of your accountancy needs so you can focus on your business.

numbers
chartered certified accountants

We are here to help you with:

- Company accounts & corporation tax
- Self assessment tax returns
- Book keeping, VAT (including Making Tax Digital), Payroll & CIS
- Company secretarial services

Wishing you all a peaceful Christmas and a Happy 2023

Matt Ryan FCCA | Numbers Limited | 01296 620220 | info@numbers-ltd.co.uk
32 High Street, Wendover, Bucks, HP22 6EA | www.numbers-ltd.co.uk

Graham Blake

soft furnishing

- Loose covers
- Curtains
- Re-Upholstery
- Tracks & Poles

TEN YEAR GUARANTEE

For personal, helpful service, please call

Tel: 01844 261769
Mob: 07801 182400

grahamblake123@btconnect.com

www.grahamblake.com

CONCIERGE - LANDSCAPE - JAN 19/Layout 1 04/01/2019 10:50 Page 1

Concierge

Property Maintenance

Concierge Property Maintenance delivers an unsurpassed level of commitment and service personalised to meet every individual property need. Our team of skilled craftsmen truly care about your home or work as if it was their own. If you are a Concierge Premier Member, we guarantee priority attention from our team of skilled craftsmen 24 hours a day, 365 days a year. We offer high quality workmanship and timely support in all aspects of maintenance including:

- Building works and extensions • Carpentry • Painting & Decorating
 - Kitchen and bathroom design, build and installation
 - Plumbing • Electrical works • CCTV & Alarm services
 - Handyman services • Plastering • Flooring • Insurance work




Please contact the team today to see how we can help you.

Tel: 01494 702099

Kings Head House, 15 London Road, Beaconsfield, Bucks HP9 2HB

www.conciergepropertymaintenance.co.uk



An award winning local company providing outstanding care in your own home.

Staying at home is certainly the most preferable option for most people and often all it needs is a professional carer to make that possible. Ashridge can match you with a qualified carer to ensure all your support needs are met and you live your best life in the familiar surroundings you love.

Ashridge is one of the few companies to offer both full time live-in carers or part-time visiting carers to ensure you have just the right amount of support to be independent and safe.

“ My 88-year-old husband who has vascular dementia suffered a crisis. We were woefully unprepared and realised hands-on help was needed. Ashridge Home Care assessed the situation and found us a live-in carer at very short notice. He was wonderful, a perfect match for my husband. Our carer was calm, experienced with dementia, patient, and very kind. I highly recommend Ashridge Home Care. You will be in safe hands.”

Providing Outstanding Home Care

Call for a friendly chat on 01494 917344 or visit ashridgehomecare.co.uk





BRADLEY & JONES

FUNERAL DIRECTORS

Renfrew Cottage, Back Street Wendover HP22 6EB

01296 622975 tim@bradleyandjones.co.uk 07711750917

Experts in Plumbing, New Boiler & Central Heating Systems

ANNUAL MAINTENANCE CONTRACTS FROM £85

- Oil & Gas Boiler Replacements
- Repairs & Servicing
- Landlord Gas Safety Certificate
- Full Installations & Upgrades to Heating Systems
- Power Flushing
- All Types of Plumbing



SURAB

L I M I T E D



A local reliable business for over 20 years, we have over 600 satisfied maintenance customers, customers who no longer worry about the possibility of their boiler letting them down

oil
&
gas

plumbing

finance
options
available

annual
maintenance
contracts

FOR FURTHER INFO CALL
01844 274604
www.surab.co.uk

Office @ Old Rifle Range Farm
Great Kimble, Aylesbury HP17 OXS
Finance Available (Written Details on Request)

Directory of Advertisers				
Genre	Business Name	Service Provided	Contact	Page
APPLIANCE, REPAIR, GARDENING, HOUSE & CLEANING SERVICES	Airs House	Carpets & Flooring	sales@airshouse.co.uk 01844 342546	49
	Anthony's Servicing	Service & maintenance of boilers, fires, agas/ rayburns	anthonys.service@gmail.com 01296 658419 07973 911674 www.anthonyservice.co.uk	47
	Brendan McFall	Painter & Decorator	brendanmcfall511@btinternet.com 07581 693653 01296 294175	49
	Clements Carpentry	Carpentry & Property Services	clementscarpentry@hotmail.co.uk 01296 625863 07584 201706	59
	Concierge Property Maintenance	Building Work, Carpentry and other Property Services	01494 702099 www.conciergepropertymaintenance.co.uk	52
	Extreme Clean	Cleaning Services Carpet, Flooring & Upholstery Cleaning & Treatments	jjjp@uwclub.net 01844 346379/344735 07866 376934 www.extremecleanco.uk	49
	Graham Blake	Soft Furnishings	grahamblake123@btconnect.com 01844 261769 07801 182400 www.grahamblake.com	52
	M Simmonds	Painter & Decorator	michael@msimmonds.co.uk 01296 655774 07850 499795 www.msimmonds.co.uk	60
	Martin Holman's Pest Control & Services	Domestic & Commercial Treatments/Prevention for rodents & insects	ratman01@talktalk.net 01296 622972 07510 290321 www.martinholmanpestcontrol.co.uk	46
	Roofcraft	Specialists in all forms of roofing	01296 624369 07889 681828	50
Surab	Experts in Plumbing, New Boiler & Central Heating Systems	01844 274604 www.surab.co.uk	55	

Directory of Advertisers				
Genre	Business Name	Service Provided	Contact	Page
APPLIANCE, REPAIR, GARDENING, HOUSE & CLEANING SERVICES	The 50 plus Handyman	The 50 plus Handyman	The 50 plus Handyman	59
	Village Environmental Services	Family run domestic drain services with 24/7 callout service	01296 624221 (messages) 07850 635844	48
FOOD AND DRINK	Buckmoorend Farm Shop & Kitchen	Farm shop & kitchen selling home reared meats & other local produce as well as hot food & drink	info@buckmoorendfarm.co.uk 01296 624425 www.buckmoorendfarm.co.uk	46
	Chiltern Brewery	Brewery selling award winning ales & tastings	01296 613647 www.chilternbrewery.co.uk	2
	The Russell Arms	A real village pub and restaurant	hello@therussellarms.co.uk 01296 624411 www.therussellarms.co.uk	51
	Sweeneys	Award winning local supermarket		45
ARTS & CRAFTS	Colour Wheel	Art Classes	www.colourwheelartclasses.co.uk 01494 972384	46
CARE AND HEALTH SERVICES	Ashridge Home Care	Care company providing around the clock care in your own home	info@ashridgehomecare.co.uk 01494 917344 www.ashridgehomecare.co.uk	53
FUNERAL SERVICES	Bradley & Jones	Funeral Directors	www.bradleyandjones.co.uk 01296 622975	54
RETAIL	Antiques at Wendover	A datelined antiques centre	01296 625335 www.antiquesatwendover.co.uk	60
ACCOUNTANCY SERVICES	Numbers Limited	Accountancy, Tax and Bookkeeping Services	info@numbers-ltd.co.uk 01296 620220 www.numbers-ltd.co.uk	52
COMPUTER AND INTERNET SERVICES	Wendover Computers	Computer Equipment Supply, Repair and Upgrading	pete@wendover-computers.co.uk 0800 3118385 07881 555482 www.wendover-computers.co.uk	59
TRAVEL SERVICES	Travel Impressions	Independent Travel Agent	enquiries@travelimpressions.co.uk 01442 890265 www.travelimpressions.co.uk	51

Directory of Local Organisations

Ellesborough Parish Council	Chairman, Debra Panikkar	07748 630102
	Parish Clerk, Mr John McKeown	07880 732574
	Windward, North Lee Lane, Terrick HP22 5YB	
	Parish Council Update	contact Clerk
Buckinghamshire Council	Councillor Clive Harriss	07768 876568
- Ridgeway East Ward	Councillor Steve Broadbent	07471 144181
	Councillor David Carroll	see website
Member of Parliament	Greg Smith MP	0207 2194287
		greg.smith.mp@parliament.uk
Ellesborough Parish Hall	Bookings Secretary, Mrs Elizabeth Hine	625912 or lizziehine@talktalk.net
Kimble Stewart Hall	Bookings Secretary, Amanda Robinson	07527 595813
Dunsmore Village Hall Association	dunsmorehallbookings@gmail.com .	
Ellesborough Magazine	Chairman, Mr Richard Jennings	625498
	Editor	edellesboroughmgz@gmail.com
	Treasurer, Mr Tony Young	622306
	Distribution, Mrs Janette West	696688
	Secretary, Judith Harper	622033
	Advertising, Annabelle	ellesboroughmagazine@hotmail.co.uk
Ellesborough Magazine on line	ellesborough-pc.gov.uk	
Ellesborough Silver Band	For contact details see website http://www.ellesboroughsilverband.co.uk/	
Great Kimble Church Of England First School	Headteacher	01844 346189
Kimble and Ellesborough Horticultural Society	Membership Secretary, Charlie Taylor	07710 504300
Chiltern Ladies Group	President, Mrs Elizabeth Hine	lizziehine@talktalk.net
Brownie Guides	Girlguiding Buckinghamshire	girlguidingbucks.org.uk
The Scout Association, Buckinghamshire	Enquiries, County Office	631016
Ellesborough Church	Church Warden, Mr Tony Young	622306
	Treasurer, Paul Couling	07903 162378
	Tower Captain, Mr Les Floyd	01844 345575
Dunsmore Church	Secretary To The Trustees	
	- Jacqui Lipton-Rose	07795 143430
Kimble Free Church		612748
Ellesborough Trust	Chairman, Mr Rob Nicholson	612658
	Secretary, Mrs Tracey Davison	07847 969944
The Children's Society Box Coordinator	Zoe Hinton	01844 761600
Community Car	Booking Co-ordinator	317769
Risborough Area Community Bus	Co-ordinator	07941 963097
Facebook	Your Ellesborough	
What's App	Ellesborough Follies - friendly unofficial group	

Clements

CARPENTRY & PROPERTY SERVICES
clementscarpentry@hotmail.co.uk

- MAINTENANCE
- REFURBISHMENT
- MODERNISATION
- PROJECT MANAGEMENT

FULLY INSURED

📞 **07584 201706**
 📠 **01296 625863**

The **50** plus

Home Repairs

- Plumbing • Electrical
- Handy • Decorating
- Gardening
- And more from
 - Tap washers and
 - Showers and heating
 - To consumer units (fuse boxes)
 - Fencing and external works
 - Plus technology and help at home for the elderly



Call or visit our web site for full details of our broad range of services, helpful advice & pricing

01494 784 448

www.the50plus.co.uk

Serving customers for over 20 years

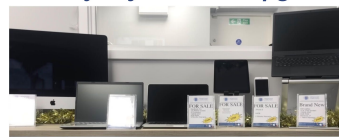
COMPUTER TROUBLE?



WENDOVER COMPUTERS

Back Street, Wendover 01296 200275

*Do you feel like throwing your computer out of the window?
 fed up with it going slow?
 Crashing or freezing?
 Strange messages popping up?
 or would you just like to upgrade?*



Come and check out the Wendover Computers refurbished station. We stock iPads, iPhones, iMacs, Macbooks, PCs and Laptops

Speed up your slow Computer with an SSD
 Significantly improve the performance of computer by upgrading the old HDD



Brand new Dell Laptop
 Windows 11
 SSD

iPhone & iPad repairs
 anything from smashed screens to battery replacements



help@wendover-computers.co.uk
 www.wendover-computers.co.uk



ANTIQUES AT... WENDOVER

Antiques Centre - Established 1987



Late 17th C
3 panel oak chest,
with original hinges
£298



Please join us late night shopping in Wendover Wed 30th,
November and Sun Dec 11th, for mulled wine and mince pies.

Open 7 Days a Week

10am- 5.30pm Monday to Saturday

11am - 5.00pm Sundays and Bank Holidays

Car Park, Tea Room, Barn shops and Gallery

Antiques At...Wendover, The Old Post Office, 25 High Street, Wendover, Bucks. HP22 6DU
www.antiquesatwendover.co.uk ☎ 01296 625335



**Audited, Vetted
& Approved** by the
Buckinghamshire County Council
Trading Standards

"Excellent value for money"
"Fantastic work" "Totally reliable &
trustworthy" "Meticulous attention
to detail" "First rate personal
service" "Always professional"
"Conscientious, diligent &
courteous"

INDUSTRIAL | COMMERCIAL | DOMESTIC

M. SIMMONDS Decorating Contractors

A Complete Painting & Decorating Service

Family Business Established Since 1979 we pride
ourselves as one of the best in the business

- Expertise in painting, decorating and wallpapering
- Specialist in all Interior and Exterior work
- Full carpentry and repair service
- We can take care of all your modernisation and
refurbishment plans, undertaking and overseeing all
plastering and small electrical work

CALL NOW for a FREE ESTIMATE, and put us to the test



T 01296 655774 M 07850 499795

E michael@msimmonds.co.uk www.msimmonds.co.uk

f thehairystick @thehairystick msimmonds_decorating in M Simmonds Decorating Ltd

Approved, fully trained & qualified. Office: Hobbs Barn, Klee Close, Quainton HP22 4AF

Craftsmen Decorators
Carpentry & Repairs
Refurbishment